



Tilburg University, The Netherlands

INTERNATIONAL PROGRAMS 2022/2023

www.tilburguniversity.edu

Welcome to Tilburg University!

Choosing a university and study program is both important and exciting. What are you passionate about? And what are your career aspirations? There are many factors to consider and it is well worth investigating your options as early as possible.

Tilburg University is a research university based in the south of the Netherlands, known for its high-quality education, social orientation, and strong campus feeling. We offer more than 70 English-taught Bachelor's, (pre-)Master's, and Research Master's programs in the areas of:

- Entrepreneurship
- Economics, Management & Business
- Law & Public Administration
- Social & Behavioral Sciences
- Data Science & Artificial Intelligence
- Communication & Digital Sciences
- Finance & Accountancy
- Humanities & Theology

Understanding Society

At Tilburg University, our mission is to inspire students to contribute to the development of a better, fairer, and more sustainable society.

Our educational programs instill broad social awareness and stimulate critical personal and professional skills. Our professors and students work on solutions and innovations for complex issues every day. They address issues related to the aging population and healthcare, to working towards a resilient society able to deal with the impact of financial crises, political differences, climate change, new technologies, and the responsible use of big data. These issues often involve multiple disciplines. We also invite other knowledge institutions, companies, (local) governments, and citizens to work together with us. In that way, new insights develop, and valuable answers are found. We call this Social Innovation.

With COVID-19 affecting the way we learn and teach, we are continuously seeking ways in which we can provide quality education while safeguarding the health of our students and staff.

To get further information on how Tilburg University is addressing COVID-19 and its implications on your studies, we would like to refer you to www.tilburguniversity.edu/corona

Tilburg, a real student city!

1 in 7 people in Tilburg is a student, so student life is essential to what happens in Tilburg. The city has something to offer for everyone: a thriving cafe and restaurant culture, sports, art films, world-class pop music and classical music, and great contemporary art. Combined with numerous events, exhibitions, and conferences, you will enjoy an exciting student life.

With a population of more than 221,000, Tilburg is the seventh-largest city in the Netherlands. It is conveniently located, as it is a short train ride to cities like Amsterdam, The Hague, Rotterdam, and easy access to European capitals like Brussels, Paris, and London.

Being located in the Brainport region of the Netherlands, the university is at the heart of an innovative and rapidly growing high-tech haven. Students and graduates are able to seek out internships and employment opportunities at an array of innovative international companies in the region.

To learn more about Brainport visit www.brainporteindhoven.com/study.



If you choose to study at Tilburg University, you choose a world-class university on a lively campus that offers cutting-edge research and teaching.



5 reasons why you should consider studying in the Netherlands

#1 International and open-minded

The Netherlands has traditionally been an internationally oriented nation, known for its open-mindedness. The country also ranks #1 worldwide on English proficiency as a non-native language (EF English Proficiency Index 2020). So you can get around perfectly without speaking any Dutch.

#2 Many opportunities for an international career

Some of the biggest multinationals, including Philips, Heineken, KLM, Shell, ING, and Unilever are Dutch. And with it being the 17th largest economy in the world (despite its size ...), there are plenty of opportunities to stay for your career. This is one of the reasons that over 100,000 international students choose to study in the Netherlands annually, so 1 in 10 students in the Netherlands is an international student!

#3 Live in one of the safest, happiest, and healthiest countries

The Netherlands is one of the safest countries in the world (Global Peace Index 2021) while ranking in the top 5 of the happiest countries worldwide (World Happiness Report 2021), being one of the healthiest countries (ranked #15 in the Bloomberg Global Health Index 2021).

#4 Quality of education

Higher education in the Netherlands has a worldwide reputation for its strong quality. All Dutch research universities belong in the top 250 in the world (THE, 2021). All Bachelor's and Master's programs are accredited (i.e. officially recognized) by the Accreditation Organization of the Netherlands and Flanders (NVAO).

#5 Innovative and interactive

Dutch people enjoy innovation and working on original ideas. This is demonstrated by the fact that we rank #5 in the world on the Global Innovation Index 2020, outpacing countries like the US, the UK, and Germany. The Netherlands also fosters a culture of interaction. This is certainly true in the classroom, where you will interact and work with other students and your lecturers in an open and informal environment.



Why study at Tilburg University?

The educational profile of Tilburg University is built on three pillars:



Knowledge



Skills



Character

Besides in-depth academic knowledge and professional expertise, a great deal of attention is paid to the development of skills and character. As a student, you are continuously encouraged to come up with creative ideas and to think beyond conventional solutions and methodologies. In-class discussions and group work keep you actively engaged and involved. You will be educated to become a thinker who dares to act and actively contributes to society. **Hence our motto: Understanding Society.**



10,729
Bachelor's students



2,188
Pre-Master's students



6,417
Master's students



706
PhD Students
44% international

19,000+
students

111
nationalities

30%
international students in our English-taught programs

Dynamic and green campus

Tilburg University has a green campus that is located on the edge of a park-like forest. The campus itself is bustling with student activity and offers a great place for students and lecturers to form a close-knit international community.

Travel the world

Spend a semester abroad at one of our 200+ partner universities all over the world. You will strengthen your resume, while developing strong intercultural skills in preparation for an international career.

Challenge yourself

For students who feel ready to take on challenges above and beyond their regular course of study, there are a number of interesting possibilities such as honors and leadership programs, courses in Entrepreneurship, and Extended Master's Programs.

Top quality in Business and Economics

Tilburg University ranks #6 in Europe and #20 worldwide in Business & Economics in the US News Best Global Universities Ranking 2021, #37 in Business & Economics in the Times Higher Education ranking, and #6 in Business Administration in the Shanghai Ranking (ARWU).

Improve your language skills

Would you like to learn a new language? Dutch, German, Spanish, or Russian perhaps? At Tilburg University, every student receives 2 free vouchers to use at our Language Center.

Mind Labs

A combination of technology and behavioral sciences expertise gives our students and staff great opportunities for innovative teaching and research.

- Virtual and Mixed Reality Lab
- Serious Games and Education Lab
- Natural Language and Data Technologies Lab
- Robotics & Avatars Lab

Top 100!

In the QS World University Rankings by Subject 2021, we rank in the Top 100 for the following subjects:

- # 28 in Economics & Econometrics
- # 36 in Accounting & Finance
- # 82 in Law & Legal Studies
- # 72 in Business & Management
- # 50 in Psychology

Do an internship

Most of our Bachelor's programs have a mobility window in the 3rd year which allows you to do a Minor, go on exchange, or the option to combine an internship with your courses.

Excellent facilities

Tilburg University has all the modern facilities you need within walking distance. Study at our in- and outdoor workstations, work out at our top-notch Sports Center, or enjoy a break at one of our many restaurants and cafés, including a Starbucks!

Join a study or student association

Tilburg University has numerous study and student associations offering networking, skills building, and social opportunities that can truly enrich your student life.

Healthy campus

Tilburg University is a smoke-free campus to further promote the UN Sustainability Goal and our strategic theme of 'Enhancing Health & Wellbeing'.

TOWARDS A
**SMOKEFREE
GENERATION**

Program Portfolio



| | BACHELOR | MASTER | | |
|----------|---------------------|-------------------------|--|----------------------------|
| | Bachelor's programs | Master's programs | Multiple Degree Master's programs | Research Master's programs |
| Duration | 3 years | 1 year | 1.5-2 years | 2 years |
| Language | English | English | English | English |
| Start | Sept | Sept/Feb | Sept/Feb | Sept |
| ECTS | 180 | 60 | 120 | 120 |
| Title | BSc/BA/LLB | MSc/MA/LLM | 2 or 3 MSc/MA/LLM (from different institutions) | MSc/MA |
| Focus | Academic foundation | Academic specialization | Combine 1 or more degrees (from different institutions) | Preparation for a PhD |

PhD programs

Duration: 3 to 5 years

After you have completed a (Research) Master's program, there are several ways to obtain a PhD degree:

- as a PhD student employed by Tilburg University for a period of three or four years,
- as an external PhD student,
- as a PhD student with a grant,
- as a dual PhD partially employed by Tilburg University and partially by a third party (e.g. a company or government agency.)

www.tilburguniversity.edu/phd

International Foundation Year – Pre-Bachelor

If you are not directly eligible for admission to our Bachelor's programs, you can apply for an International Foundation Year at the Holland International Study Centre. This pathway program helps you bridge the educational gap by developing your academic and English language skills. Upon successful completion, you can start a selection of Bachelor's programs at Tilburg University.

Find more information about the International Foundation Year, on our website: www.tilburguniversity.edu/foundationyear

Pre-Master's programs

We offer Pre-Master's for research university students and students from a Dutch University of Applied Sciences (HBO) who are not directly eligible to enroll.

Find more information on our website:
www.tilburguniversity.edu/education/masters-programmes/premasters

Good to know: What is a research university?

Higher education in the Netherlands is offered at two types of institutions:

- Research universities (13 in the Netherlands, among which Tilburg University)
- Universities of applied sciences (37 in the Netherlands)

Research universities offer the highest level of education available and are a good investment in your career: the total long-term annual income of research-university graduates in the Netherlands is nearly 50% higher than that of graduates of a university of applied sciences. Education at a research university is more theoretical and at an academic level, whereas education at a university of applied sciences is more practice-oriented.

www.tilburguniversity.edu/dutch-higher-education

"I originally picked the university because of the study program, and upon arrival I was amazed to discover an incredible international community on this compact, modern campus! I've made friends with people from every continent except Antarctica!"

Javier Torralba Flores - Guatemala,
BSc Economics student

OUR BACHELOR'S PROGRAMS

| | Non-EU Tuition fee per year (approx.) | Application deadline |
|---|---|-------------------------|
| Economics & Management | | |
| BSc International Business Administration Study a program with a focus on the business world, where you immerse yourself in the fundamentals of business and its social aspects. | € 9,000 | 1 April |
| BSc Economics Study a top-rated program aimed at understanding, analyzing, and forecasting economic behavior and global economic changes, and their implications for the performance of organizations. | € 9,000 | 1 April |
| BSc Econometrics and Operations Research Study how you can use mathematics and statistics to optimize complex processes and apply your analytical skills to economic and societal challenges, such as insurance, risk and asset pricing, or supply chain design. | € 9,000 | 1 April |
| BSc Entrepreneurship and Business Innovation Study an innovative program where you will develop your knowledge, skills, and expertise to have an impact, by either starting a new business or driving innovation within an existing organization. | € 9,000 | 1 April |
| Social & Behavioral Sciences | | |
| BSc Global Management of Social Issues Study how to understand and manage international societal challenges like unemployment rates or global warming by combining insights from human resource studies, organization studies and sociology. | € 9,000 | 1 April |
| BSc Psychology* Study human behavior and its influencing factors, and specialize in one of the nine areas of your choice in psychology. You can customize your program by combining a major and minor that fits your interests and career aspirations. | € 9,000 | 15 January |
| BSc International Sociology Study the relationship between individuals, groups, and society, learn to understand social problems, and specialize in the analysis of social phenomena in the modern world. | € 9,000 | 1 April |
| BSc Human Resource Studies: People Management Study the management of people at work by combining insights from psychology, management studies, sociology, and economics. | € 9,000 | 1 April |
| Law | | |
| LLB Global Law Study a unique transnational program where the major legal systems in the world are studied to solve and tackle global legal challenges. | € 10,900** | 1 April |
| Data Science & Artificial Intelligence | | |
| BSc Cognitive Science and Artificial Intelligence Study how intelligent systems function and their connection to the human mind while developing programming, computational modeling, and machine learning skills by applying them to real-world problems. | € 9,000 | 1 April |
| BSc Data Science Study how to create value from data and learn to analyze the large amounts of data that today's society operates on. You will learn how to discover trends and patterns that are relevant for businesses, government agencies or nonprofit organizations. This program is a joint Bachelor's program in cooperation with the Eindhoven University of Technology. | TBA | 1 April |

* This program is a Numerus Fixus program with limited places available and a selection process after applying. To learn more visit: www.tilburguniversity.edu/students/administration/registration/clausus

** The institutional fee of € 14,900 is lowered to € 10,900 by a tuition fee waiver.

All fees shown are an indication. The exact fees for 2022-2023 will be determined at the start of 2022 and will then be available online at www.tilburguniversity.edu/tuitionfees



Culture

BA Online Culture: Art, Media and Society

Study how digitalization and globalization influence our way of living by discussing the new forms of communication, art expressions, and (social) media expressions while researching how they are influenced by a society that is becoming more digital.

University College Tilburg

BA/BSc Liberal Arts and Sciences

Study an international program that combines a broad and interdisciplinary education into liberal arts and sciences with the option to specialize in one of the 5 majors: Business and Economics, Law in an International Context, Social Sciences, Arts and Humanities, or Cognitive Neuroscience.

Theology

BA Theology

Study the interactions between humanity, society, faith and reason by reflecting from various disciplines such as history, philosophy, literature and social sciences. You learn to understand existential issues and questions about the meaning of life, the forming of identity, traditions and values both in the past and present in the only Catholic theology Bachelor's program in the Netherlands.

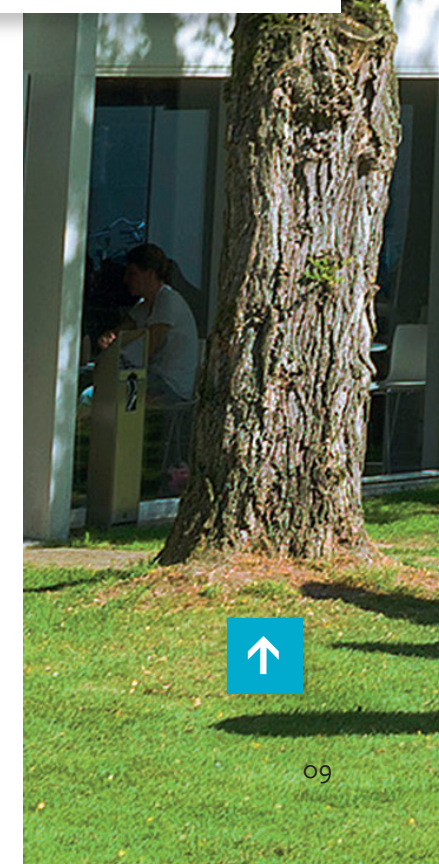
| Non-EU Tuition fee per year (approx.) | Application deadline |
|---|-------------------------|
| € 9,000 | 1 April |
| € 9,000 | 1 April |
| € 2,205 | 1 April |

IMPORTANT:

Please note that some programs may extend their application deadlines beyond the deadlines mentioned here. A full overview of extended deadlines can be found on our website www.tilburguniversity.edu/extended-deadlines

Do you hold a passport from the EU or European Economic Area? Please note that a reduced tuition fee rate applies to you. The tuition fee for EU and EEA students is 2,205 euro. For more information check www.tilburguniversity.edu/tuitionfees

www.tilburguniversity.edu/bachelors



OUR MASTER'S PROGRAMS including Tracks

Communication, Digital Sciences, Culture & Philosophy

| | Duration | Start date(s) | Non-EU Application deadline | Tuition fee per year (approx.) |
|--|----------|---------------|-----------------------------------|-----------------------------------|
| MSc Business Communication and Digital Media ** | 1 year | Sep/Feb | 1 April / 1 Oct | € 14,900 |
| MSc New Media Design ** | 1 year | Sep/Feb | 1 April / 1 Oct | € 14,900 |
| MSc Communication and Cognition ** | 1 year | Sep/Feb | 1 April / 1 Oct | € 14,900 |
| MSc Communication and Information Sciences | 1 year | Sep/Feb | 1 April / 1 Oct | € 14,900 |
| MA Health Humanities ** | 1 year | Sep | 1 April | € 14,900 |
| MA Management of Cultural Diversity ** | 1 year | Sep | 1 April | € 14,900 |
| MA Art and Media Studies ** | 1 year | Sep | 1 April | € 14,900 |
| MA Digital Culture Studies ** | 1 year | Sep | 1 April | € 14,900 |
| MA Philosophy of Humanity and Culture ** | 1 year | Sep/Feb | 1 April / 1 Oct | € 14,900 |
| MA Philosophy of Contemporary Challenges ** | 1 year | Sep/Feb | 1 April / 1 Oct | € 14,900 |
| MA Philosophy of Data and Digital Society ** This is a new track that will begin in September 2022 | 1 year | Sep/Feb | 1 April / 1 Oct | € 14,900 |
| MA Philosophy of Mind and Psychology ** | 1 year | Sep/Feb | 1 April / 1 Oct | € 14,900 |
| MA Research Master in Linguistics and Communication Sciences * | 2 years | Sep/Feb | 1 April / 1 Oct | € 2,205 |

Data Science & Artificial Intelligence

| | | | | |
|--|---------|---------|-----------------|----------|
| MSc Business Analytics and Operations Research | 1 year | Sep/Feb | 1 April / 1 Oct | € 14,900 |
| MSc Cognitive Science and Artificial Intelligence | 2 years | Sep | 1 April | € 14,900 |
| MSc Data Science and Entrepreneurship <small>offered jointly with Eindhoven University of Technology</small> | 2 years | Sep | 1 April | TBA |
| MSc Data Science and Society <small>Tracks: Health / Media / Business / Governance</small> | 1 year | Sep/Feb | 1 April / 1 Oct | TBA |

Economics & Management

| | | | | |
|--|------------------|------------|------------------|----------------------|
| MSc Accountancy | 1 year | Sep/Feb | 1 April / 1 Oct | € 14,900 |
| MSc Business Analytics and Operations Research | 1 year | Sep/Feb | 1 April / 1 Oct | € 14,900 |
| MSc Econometrics and Mathematical Economics | 1 year | Sep/Feb | 1 April / 1 Oct | € 14,900 |
| MSc Economics <small>Tracks: Law and Economics / Public Policy / Sustainable Development / Data Science / Financial Economics / Behavioral Economics</small> | 1 year | Sep/Feb | 1 April / 1 Oct | € 14,900 |
| MSc Finance <small>Track: CFA®</small> | 1 year | Sep | 1 April | € 14,900 |
| MSc Information Management | 1 year | Sep/Feb | 1 April / 1 Oct | € 14,900 |
| MSc International Business Tax Economics ** | 1 year | Sep | 1 April | € 14,900 |
| MSc International Management | 1 year | Sep/Feb | 1 April / 1 Oct | € 14,900 |
| MSc Marketing Analytics | 1 year | Sep/Feb | 1 April / 1 Oct | € 14,900 |
| MSc Marketing Management | 1 year | Sep/Feb | 1 April / 1 Oct | € 14,900 |
| MSc Quantitative Finance and Actuarial Science | 1 year | Sep/Feb | 1 April / 1 Oct | € 14,900 |
| MSc Strategic Management <small>Track: Consultancy</small> <small>Track: Entrepreneurship</small> | 1 year 1 year | Sep Feb | 1 April 1 Oct | € 14,900 € 14,900 |
| MSc Supply Chain Management | 1 year | Sep/Feb | 1 April / 1 Oct | € 14,900 |
| MSc Research Master in Economics * | 2 years | Sep | 1 Feb / 1 April | € 2,205 |

* The institutional fee of €14,900 is lowered to €2,205 by a tuition fee waiver.
** Independent specialization/track as part of an accredited program.

Law & Public Administration

| | | | | |
|--|--------|---------|-----------------|----------|
| LLM European Law and Global Risk ** | 1 year | Sep/Feb | 1 April / 1 Oct | € 14,900 |
| LLM International Business Law | 1 year | Sep | 1 April | € 14,900 |
| LLM International Business Tax Law ** | 1 year | Sep | 1 April | € 14,900 |
| LLM International Law and Global Governance ** | 1 year | Sep/Feb | 1 April / 1 Oct | € 14,900 |
| LLM Labour Law and Employment Relations | 1 year | Sep/Feb | 1 April / 1 Oct | € 14,900 |
| LLM Law and Technology | 1 year | Sep/Feb | 1 April / 1 Oct | € 14,900 |
| MSc Public Governance: Public Administration, Economics and Law | 1 year | Sep/Feb | 1 April / 1 Oct | € 14,900 |

Social & Behavioral Sciences

| | | | | |
|--|---------|----------|-----------------|----------|
| MSc Cognitive Neuropsychology ** | 1 year | Sep | 1 April | € 14,900 |
| MSc Economic Psychology ** | 1 year | Sep | 1 April | € 14,900 |
| MSc Health, Wellbeing and Society ** | 1 year | Sep/ Feb | 1 April / 1 Oct | € 14,900 |
| MSc Human Resource Studies | 1 year | Sep/ Feb | 1 April / 1 Oct | € 14,900 |
| MSc Organization Studies | 1 year | Sep | 1 April | € 14,900 |
| MSc Organizing for Global Social Challenges ** | 1 year | Sep | 1 April | € 14,900 |
| MSc Politics, Policy and Societal Development ** | 1 year | Sep | 1 April | € 14,900 |
| MSc Positive Psychology and Well-being ** | 1 year | Sep | 1 April | € 14,900 |
| MSc Sociology: Politics, Policy and Society in Comparative Perspective | 1 year | Sep/ Feb | 1 April / 1 Oct | € 14,900 |
| MSc Work and Organizational Psychology ** | 1 year | Sep | 1 April | € 14,900 |
| MSc Research Master in Psychology *: Individual Differences and Assessment | 2 years | Sep | 1 April | € 2,205 |
| MSc Research Master in Social and Behavioral Sciences * <small>Tracks: Sociology / Social Psychology / Organization Studies / Methods and Statistics</small> | 2 years | Sep | 1 April | € 2,205 |

Theology

| | | | | |
|--|--------|-----|---------|---------|
| MA Christianity and Society Extended Master's Program available. This Master's program can be taken part-time. | 1 year | Sep | 1 April | € 5,400 |
|--|--------|-----|---------|---------|

* The institutional fee of €14,900 is lowered to €2,205 by a tuition fee waiver.
** Independent specialization/track as part of an accredited program.

IMPORTANT NOTE:

- Some programs may decide to extend their application deadlines. For a full overview check www.tilburguniversity.edu/extended-deadlines
- All fees shown are an indication. The exact fees for 2022-2023 will be determined in the start of 2022 and will then be available at www.tilburguniversity.edu/tuitionfees
- The fees in this table are the standard fees. Other fees apply in specific situations, e.g., for students who have already obtained a degree at a Dutch university or for students who start in Spring (February intake).

www.tilburguniversity.edu/masters

Challenge yourself, extend your degree!

In many of our programs in the field of social and behavioral sciences, economics and business, and humanities, you will have the opportunity to study abroad at one of our partner universities around the world. This can be through the **double degree or multiple degree options**. For those, seeking to build their professional

skills, there is the **Extended Master's program** where you can take part in a traineeship at one of our partner organizations in the Netherlands or abroad.

To learn more about these options you can visit the web page of the program of your choice.

Application & admission



Bachelor's programs admission requirements

Diploma requirements

Tilburg University accepts a range of secondary school diplomas from across the world. Below you will find a list of a few of the diplomas we recognize. For a full overview, please have a look at our website.

- A Dutch vwo diploma
- An International or European Baccalaureate (IB/EB)
- A European secondary school diploma which allows access to university in your own country, such as the German Abitur, the Swiss Matura, the French Baccalauréat or British A-levels.

If your secondary school diploma does not entirely meet the requirements of the program of your choice, you might be required to complete an additional year at another university before you can start at Tilburg University. For some programs, we offer a foundation year.

English language proficiency*

You need to demonstrate your proficiency in English by submitting the results of either:

- Academic IELTS: 6.0 (5.5 min. for all parts)
- TOEFL internet-based: 80
- Cambridge:
 - C1 advanced (formerly CAE): score A, B or C
 - C2 proficiency (formerly CPE): score A, B or C
- By submitting your IB or EB diploma

Different requirements apply for:

- BSc Data Science: Academic IELTS – min. 6.5 overall, 6.0 for all parts / TOEFL IBT - min. 90 overall, 21 for all parts.
- LLB Global Law: Academic IELTS - min 6.0 overall, 6.0 for all parts.

Do note, however, that exemptions are possible. To know whether you can be exempted, please refer to the admission and application page of your desired program.

Additional requirements

Additional entry requirements apply, depending on the program you are interested in. For example, for a program in the field of economics & management, artificial intelligence or data science, you need to have sufficient knowledge of mathematics. For most of our programs, you will need to take part in an application procedure, which involves writing a motivation letter, and sometimes taking part in an interview or writing an essay.

For a complete overview of our admission requirements, please visit our website: www.tilburguniversity.edu/bachelors/admissionrequirements

Master's programs admission requirements

Diploma requirements

In general, you are eligible for Tilburg University Master's programs if you have:

- A Bachelor's degree in a relevant discipline for the program of your choice

If your Bachelor's degree does not entirely meet the requirements of the program of your choice, you might be eligible for a pre-Master's program. A pre-Master's program is designed to fill knowledge gaps and provide you with the essential foundation needed to pursue the Master's of your choice.

English language proficiency*

You need to demonstrate your proficiency in English by submitting the results of either:

- Academic IELTS: 6.5 (6.0 min. for all parts)
- TOEFL internet-based: 90 (22 min. for all parts)
- Cambridge
 - C1 advanced (formerly CAE): score A, B or C
 - C2 proficiency (formerly CPE): score A, B or C

Different requirements apply for:

- most Research Master's programs:
 - Academic IELTS - min 7.0 / TOEFL IBT - min. 100.

Do note, however, that exemptions are possible. To know whether you can be exempted, please refer to the admission and application page of your desired program.

Additional requirements

Programs in the field of Economics require a GRE, with a minimum score of 160 on the quantitative part. Programs in the field of Business require a GMAT, with a minimum score of 550.

Students who finished a degree at a partner university of Tilburg School of Economics and Management with the exception of the MSc International Management will be exempted from taking the GRE / GMAT.

To view our partner list, see www.tilburguniversity.edu/tisempartners

Please visit www.tilburguniversity.edu/masters to find out the exact requirements for the program of your choice.

Costs

Besides the tuition fees, you will have living costs and other expenses. You will find life in Tilburg relatively inexpensive compared to life in other Dutch university cities, such as Amsterdam and Utrecht. The approximate cost of living is between € 700 and € 1,100 per month.

Estimated monthly costs of living

| | |
|---------------------------|-----------------------|
| (Furnished) accommodation | € 350 - 750 per month |
| Food & Drinks | € 200 - 300 per month |
| Books & Readers | € 65 per month |
| Insurance | € 100 per month |
| Sports membership | € 139 per year |



One of the popular housing options for international students is at TalentSquare

Accommodation

Tilburg University does not offer student accommodation itself, but we can assist you in the process of finding accommodation. We work with a number of preferred suppliers for housing who offer fully furnished rooms and apartments specifically for international students. It is also very common to look for housing options via the internet yourself. If you prefer this, we will help you get started with a list of recommended websites at:

www.tilburguniversity.edu/accommodation

International student support

We offer a number of excellent support services specifically for prospective international students:

- Personal guidance throughout the application and admissions procedure
- Help in finding accommodation
- Immigration services
- Registration Days
- Tilburg Orientation Program for newly arrived students
- Buddy program

Scholarships

Non-EEA/EU students

Tilburg University provides a number of scholarships for outstanding international students who have been admitted to a Master's program.

On our website, you will find a short description and a link to various types of scholarships that can help you finance your studies at Tilburg University. Please note that scholarships are limited and mainly targeted at students with excellent grades.

www.tilburguniversity.edu/scholarships

EEA/EU students

Do you hold a passport from the EU or European Economic Area? Please note that a reduced tuition fee rate applies to you. The tuition fee for EU and EEA students is € 2,205 for the academic year 2022 - 2023.

As an EU or EEA student, you also have the opportunity to apply for a loan from the Dutch government to cover the tuition fees. If you meet specific requirements, you can also apply for a loan to cover your living costs, a free public transport card, and a supplementary grant from the Dutch government.

You can find more information on www.duo.nl, click 'International visitor'.

Also, no additional earnings threshold applies to EU/EEA students, so you can have a paid job next to your studies.

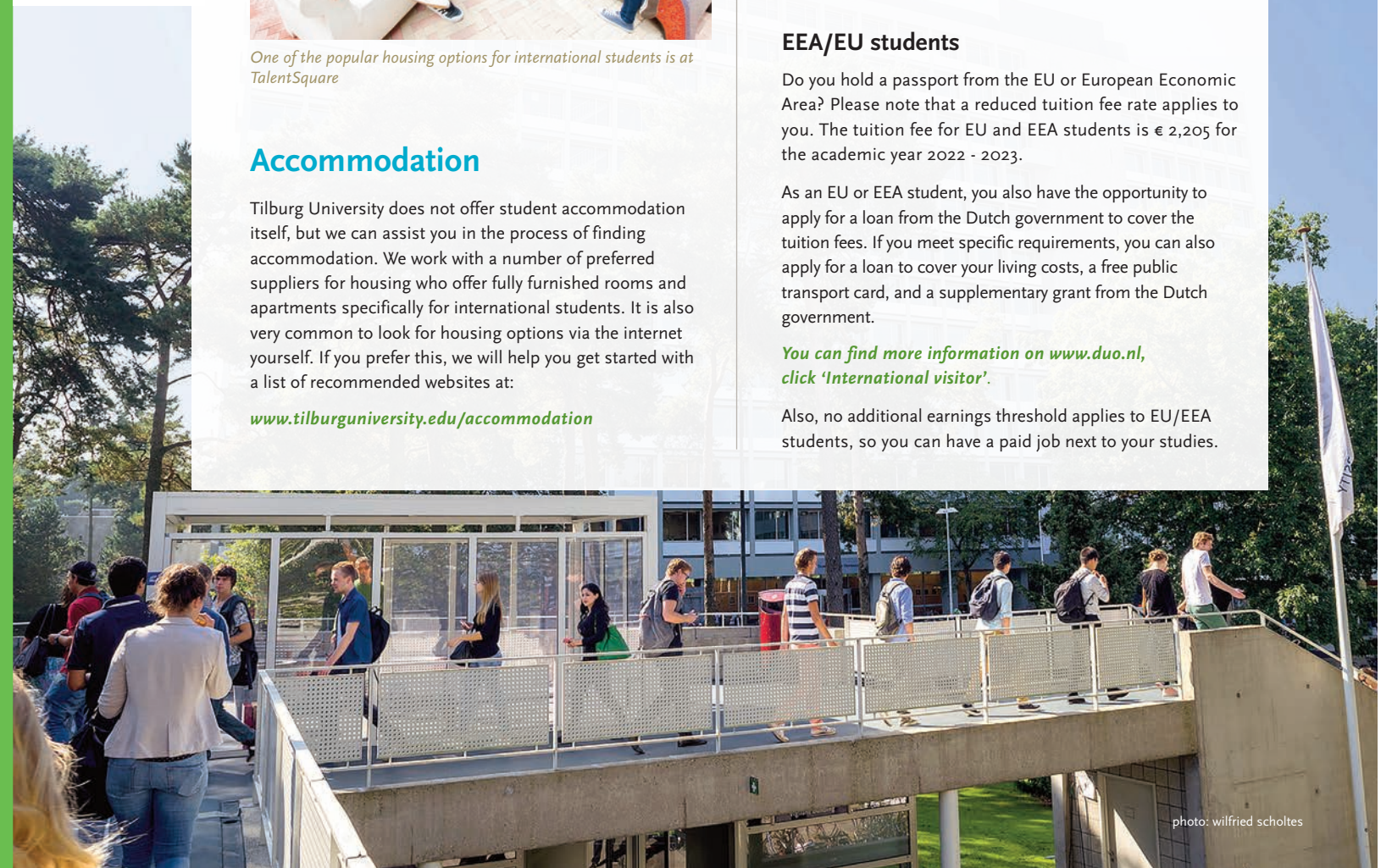


photo: wilfried scholtes

Career Preparation

At Tilburg University, we are dedicated to making your transition into the job market as smooth as possible. As a graduate, you will be equipped with skills in debating, presenting, creative and innovative problem solving, while having the opportunity to develop personally.

Student Career Services

Whether you have a clear picture for your career or still need to define it, our Student Career Services is here to help you along the way. Our Career Services officers are specialized career coaches and trainers that will assist you as you orientate and prepare yourself for the job market through finding internships, academic side jobs, board positions, as well as the following services:

- Join workshops and training courses
- Get personalized career coaching
- Meet companies at career events on campus
- Get consultations for any upcoming job applications and interviews
- Join the Mentor Program to be linked to one of our experienced alumni
- Build entrepreneurial skills and become an entrepreneur

Where do our graduates work?

Among the top employers of our graduates are:

- Ernst & Young EY
- KPMG
- Deloitte
- Philips
- Rabobank
- PricewaterhouseCoopers PwC
- ING Bank
- A variety of universities worldwide
- ASML

Our graduates...



2,35 months

average time for a graduate to find a job

92%

finds a job within 6 months



€2,875

average gross starting salary



88%

is satisfied with their Master's program

85%

would choose our university again!

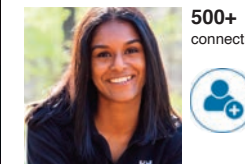


Mariana Atanasova
Global Brand Manager
Dove

Unilever

Past experience
Brand Specialist Skin Cleansing
Europe, Unilever
Master's program
MSc Business Communication
and Digital Media

www.linkedin.com/in/mariana-atanasova-4858a81b



Navodinee Wickramanayake
Senior Tech Analyst -
Business & Integration
Architecture

Accenture

Past experience
Tech Analyst - Business &
Integration Architecture, Accenture
Master's program
MSc Cognitive Science and
Artificial Intelligence

www.linkedin.com/in/navowick/



Tony Koivula
Senior Associate

Alder & Sound, Finland

Past experience
Transfer Pricing Advisor,
PwC Luxembourg
Master's program
LLM International Business
Tax Law

www.linkedin.com/in/tony-koivula

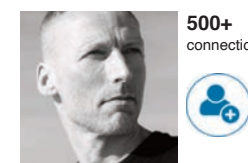


Gerrit van den Berg
Press Officer

Political Party
Christen Unie

Past experience
Senior Press Officer,
UNICEF Netherlands
Master's program
MA Christianity and Society

www.linkedin.com/in/gerritvdberg/

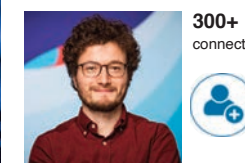


Huub Ruel
Founder and Managing
Director

Cone Academy

Master's program
MA Christianity and Society

www.linkedin.com/in/huubrue/



Omer Onur Kincilar
Marketing
Intelligence Analyst

Facebook

Past experience
Consultant, Accenture
Master's program
MSc Economics

www.linkedin.com/in/omeronurkincilar/

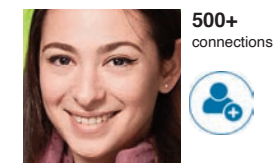


Jorge Galindo
Communication Officer

UN Migration
Berlin, Germany

Past experience
Public Information Officer, UN
Migration - Abuja, Nigeria
Master's program
MSc Communication and
Information Sciences

www.linkedin.com/in/jorgegalindo87

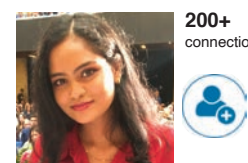


Stoyana Ivanova
EU Policy - Strategy
Regulatory & Corporate
Finance Consultant

Deloitte Luxembourg

Master's program
LLM Law and Technology
LLM International Business Law

www.linkedin.com/in/stoyana-ivanova-6b4680ba/

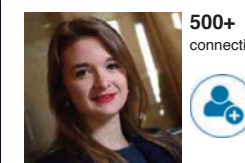


Neha Narasimha
CE Operations
Coordinator

Samsung Electronics

Master's program
MSc Supply Chain Management
Bachelor's program
BSc International Business
Administration

www.linkedin.com/in/nehakn/



Annick van Ool
Policy Advisor &
Data Analyst

De Nederlandsche Bank
Amsterdam

Past experience
Willie Towers Watson
Master's program
MSc Quantitative Finance and
Actuarial Science

www.linkedin.com/in/annick-van-ool-b6a88349/



Nne Esther Oguejiofor
Vice President and
Relations Manager

United Netherlands
Organisation

Bachelor's program
LLB Global Law

www.linkedin.com/in/nne-amakar-esther-oguejiofor-882bb99a/



Quint Zieltjens
Brand Manager

McDonald's Netherlands

Past experience
Brand Manager, Hello Fresh
Master's program
MSc Economic Psychology

www.linkedin.com/in/quintzieltjens/

FOLLOW US ONLINE



TilburgUniversity

Find all our upcoming events in our events calendar!

www.tilburguniversity.edu/education/event-calendar



**Do you want to know more?
Create your own personalized brochure!**

In a few easy steps, you can create your own customized brochure with a.o. information on program content, admission requirements, career prospects and housing and immigration matters.

www.tilburguniversity.edu/mybrochure

September 2021

