



# MAN-IMAL

Innovative graduate curriculum based on the  
“One World, One Health” concept  
promoted by the WHO, FAO and OIE

**Master's Degree**  
**From Animal to man:**  
Analysing and Managing Health  
and Food Risks



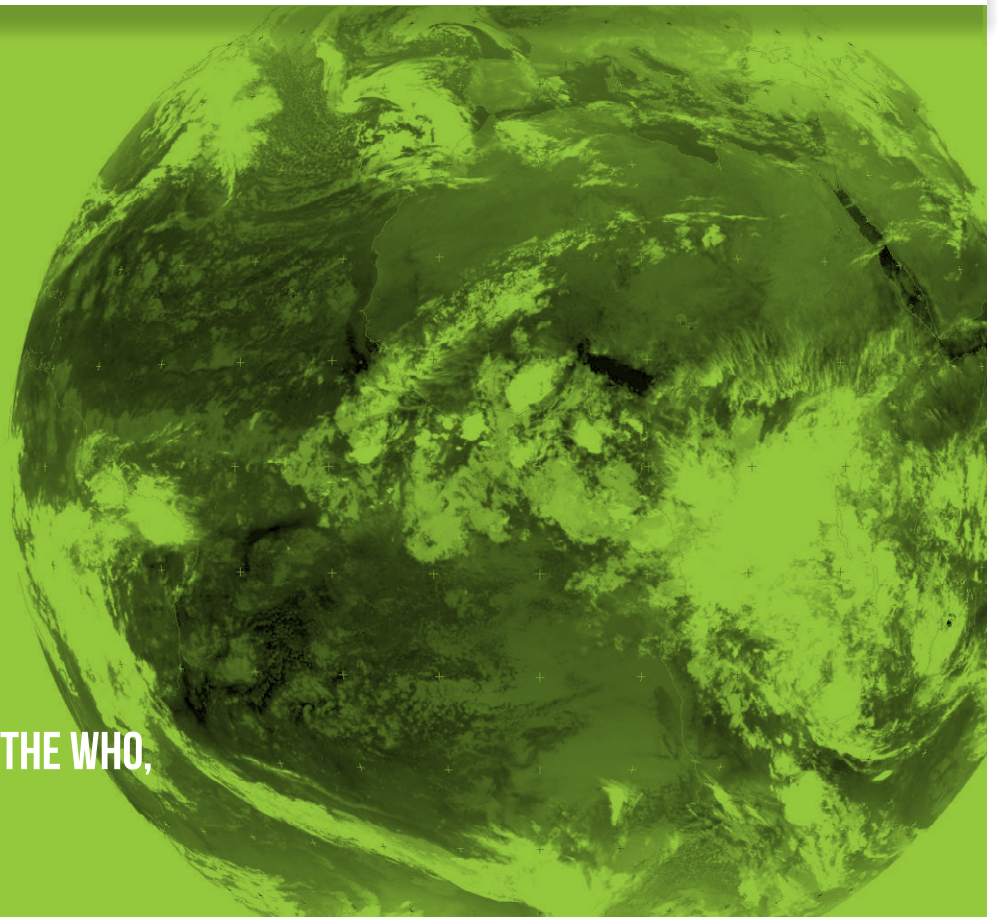
In partnership with



FROM  
ANIMAL  
TO MAN

CONCEPT  
ONE WORLD,  
ONE HEALTH

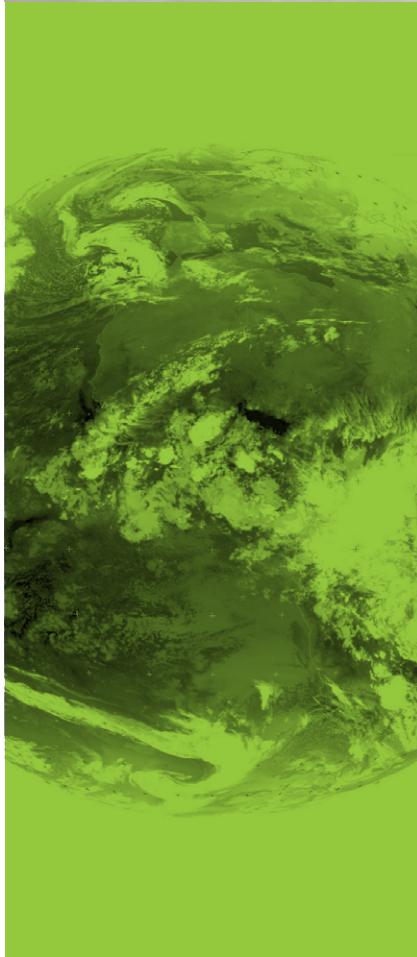
CONCEPT  
PROMOTED BY THE WHO,  
FAO AND OIE





# MAN-IMAL

FROM ANIMAL TO MAN  
Analysing  
and Managing Health  
and Food Risks



## WHY ?

Because in a globalised, industrialised society with an increasing number of stakeholders and regulations, production chains are becoming more and more complex. Based on the “One World, One Health” concept, the **man-imal** programme seeks to answer these changes thanks to a global and cross-disciplinary approach integrating.

To cope with these new issues on Public Health and Food Safety, the Master’s degree “From Animal to Man: Analysing and Managing Health and Food Risks” trains executives to new job profiles.

## HOW ?

### The Cross-Disciplinary Approach is ensured by:

- A partnership between **4** renowned higher education institutions:



**Veterinary public health, health and animal farming, food safety**



**UN/UA: Food and health, public health**



**ESA: Agrofood, agriculture and sustainable system conception engineering**

- Interdisciplinary teaching built on **5 Teaching Units** (see detailed diagram of the 1<sup>st</sup> semester).

### The Multicultural Approach is ensured by:

- The recruitment of students from **all over the world**
- The lectures taught entirely in **English**

### The practice training to professionalise students is guaranteed by:

- **Practical Tutored Projects** in relation to the professional world
- A 5 month **internship** previously defined by the student and professors according to the student’s precise professional project
  - **An active and customised pedagogy** relying on the use of audiovisual and multimedia technologies in teaching
  - **Courses taught by experts:** Doctors, Veterinarians, Food-processing Engineers, Researchers, Experts, and Industrialists...

## FOR WHO ?

This course trains students from various fields:



**Medicine  
Pharmacy**



**Veterinary sciences**



**Life sciences**



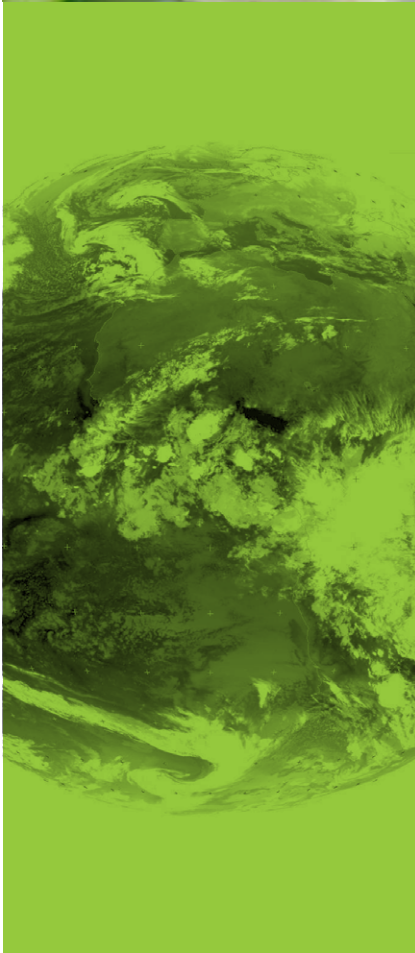
**Agricultural or Food-Processing  
Engineering**





# MAN-IMAL

FROM ANIMAL TO MAN  
Analysing  
and Managing Health  
and Food Risks



## JOB OPENINGS

### Private sector / Public sector

- Consultants and experts for the Ministry of Health, health risk assessment agencies in France and in Europe, within food-processing and pharmaceutical companies, research and development offices...
- Senior Level Scientist for the assessment and expertise of Health and Food Risks, within agricultural organisations, association of farmers, for national and international public and parapublic health organisations, or institutions taking part in Public Health Risk Assessment (EFSA, Anses, InVS, OIE, FAO...)...
- Researchers in the field of Zoonosis, Human Nutrition, Animal and Human Health, R&D directors...

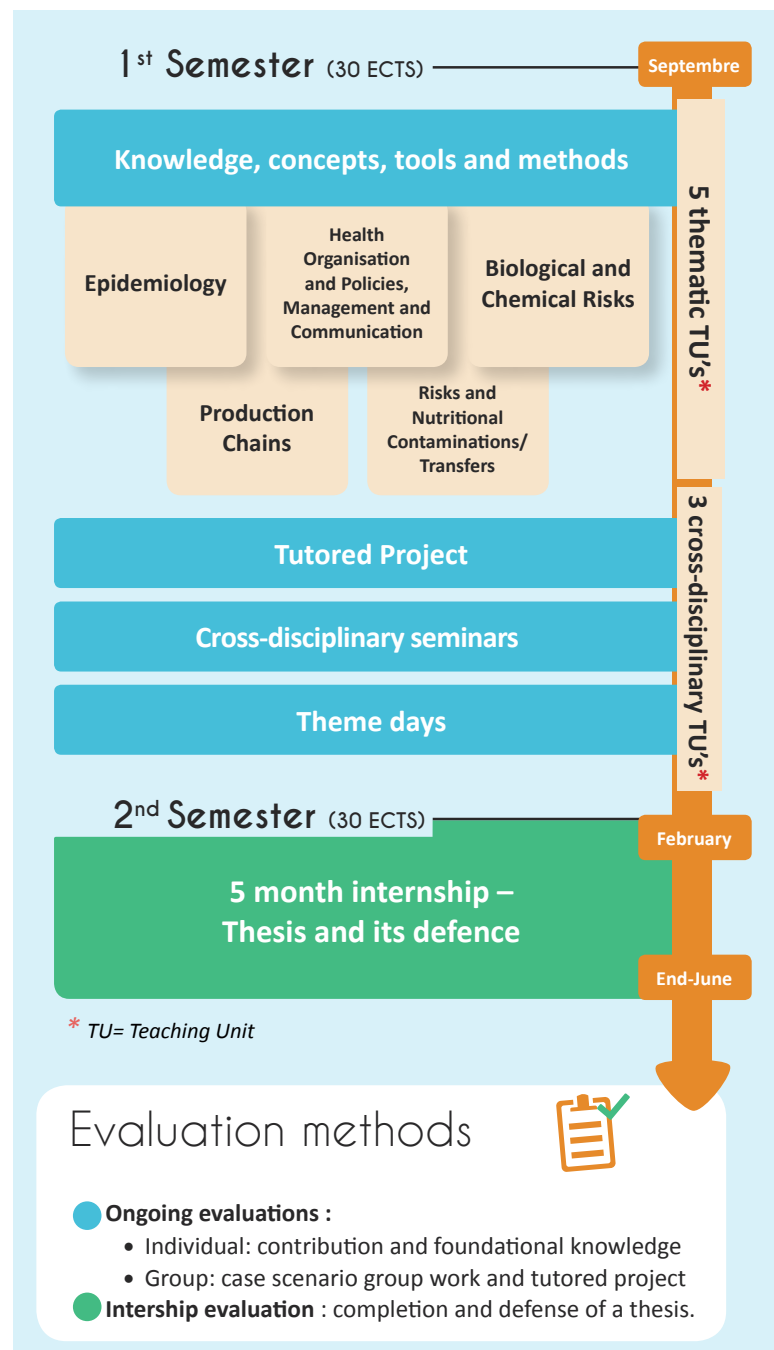
## ORGANISATION OF THE TRAINING PROGRAMME

The **first semester** is dedicated to acquiring theoretical knowledge, tools and methods. Cross-disciplinary courses are provided to develop:

- The ability to work as a multidisciplinary team
- Skills to identify the complementary partners required for case solving

During the **second semester**, students do an internship, whose subject is directly related to the **man-imal** themes, in a professional environment, in France or abroad.

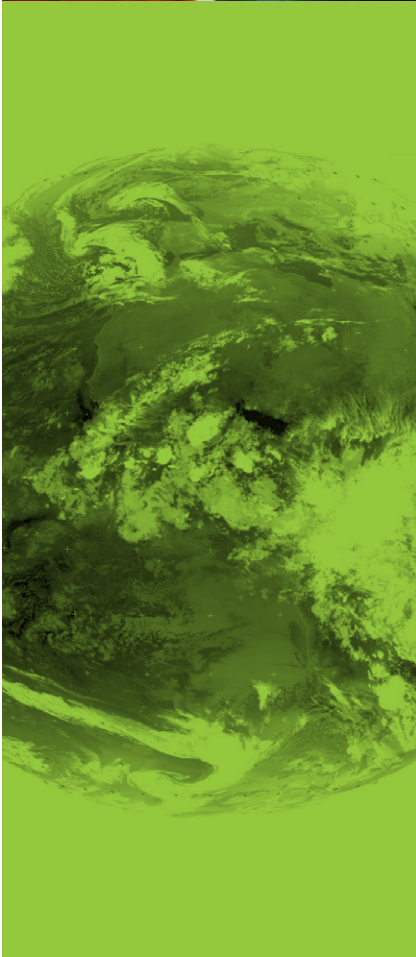
This internship leads to the completion and defence of a Master's thesis.





# MAN-IMAL

FROM ANIMAL TO MAN  
Analysing  
and Managing Health  
and Food Risks



## HOW TO APPLY

### ► Admission criteria

To apply for the Master's degree, students **must**:

- **Hold a Bachelors' degree**
- **Have completed at least one year of postgraduate studies (60 ECTS) in:**
  - Pharmaceutical or biological sciences
  - Medical studies
  - Veterinary studies
  - Food-processing or agricultural engineering

## APPLICATION SESSION FOR 2021 - 2022 ACADEMIC YEAR

Opening date : **14th December 2020**

Deadline : **26th March 2021**

## COST

**3770 euros/year**

Scholarship based on merit



## CONTACT

To apply

<https://www.oniris-nantes.fr/etudier-a-oniris/les-masters/man-imal/>

Contact

[contact.master@oniris-nantes.fr](mailto:contact.master@oniris-nantes.fr)

*This programme is supported by the French government via the French National Research Agency, under convention ANR-11-IDFI-0003*

