

PM3F

INTERNATIONAL MASTER OF SCIENCE (M.S.) DEGREE in PROCESS & BIOPROCESS ENGINEERING

Project Management for Food
Factories of the Future (Pm3F)



offered by



In collaboration with



and



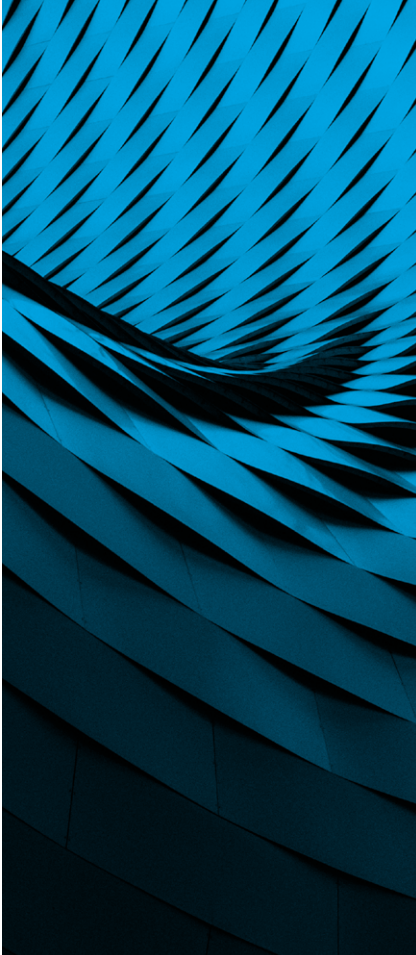
ARE SUSTAINABILITY ISSUES
MOTIVATION FACTORS IN YOUR
CAREER CHOICE ?

LAUNCH INTO THE FAST GROWING
INDUSTRIES OF FOOD PROCESSING
OR BIOTECHNOLOGIES

BECOME A CHANGEMAKER IN
ENERGY & CLEAN TECHNOLOGY
CONTROL SYSTEMS

PM3F

PROJECT MANAGEMENT
FOR FOOD FACTORIES
OF THE FUTURE



PROFILE

This 2 year integrated program is open to holders of a Bachelor's degree eager in acquiring key competencies in Project Management for Environmental and Energy Engineering (1st year-PM3E), applied to the Food Processing field (2nd year – PM3F).

- **To apply to the first year of master (M1)** : candidates with at least a scientific Bachelor of Science degree
- **To apply directly to second year of master (M2)** : candidates with a four year Bachelor degree or with a first year master's in scientific disciplines such as Chemical, Mechanical, Civil, Environmental, Electrical or Food Engineering, Physics or Chemistry.

CAREER OPPORTUNITIES FOR GRADUATES

- Project Engineer
 - Exploitation or Production Engineer
 - Consultant Engineer
 - Research & Development
- in
- Food and related industries (Biotechnology, Cosmetics, Pharmaceutical)
 - Equipment suppliers and manufacturers
 - Technical Research Centers and Engineering firms

Pm3f graduates can go into PhD programs.

ABOUT US

PM3F is an integrated specific curriculum of a Master of Science in Process and Bioprocess Engineering accredited by the French Ministry of Higher Education and Research.

The first year, PM3E (Project Management in Environmental and Energy Engineering) takes place at IMT-Atlantique¹ and focus on Ecotechnologies and Environment Process Engineering.

The second year, PM3F, takes place at Oniris². After fundamentals of Food science,/ safety and quality, emphasis is given to innovative food processing, energy management and advanced control. This period is concluded by a 6 month Master Thesis which can be completed at GEPEA³ or in any other laboratory or company.

A 3 800 m2 (41 000 sq ft)

State-of-the-Art Technology Pilot Processing Plant

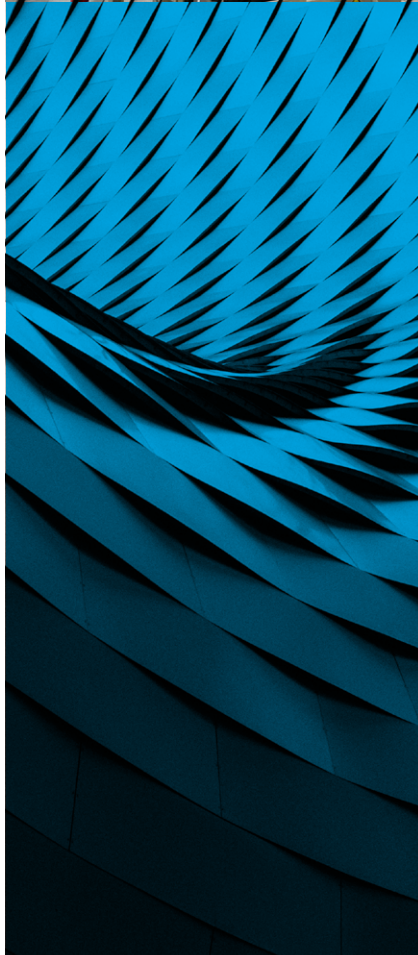
① Institut Mines Telecom Atlantique is an Elite Graduate School specialized in Digital Technology, Environment and Energy
www.imt-atlantique.fr

② Ecole Nationale Vétérinaire Alimentaire et de l'Alimentation (Oniris) is an Elite Graduate School with a campus dedicated to Food Science and Technologies
www.oniris-nantes.fr

③ GEPEA-CNRS 6144 (Process Engineering for Environment and Food) is a lead Research Unit where Academics and Researchers of IMT-A, Oniris and University of Nantes interact
www.gepea.fr

PM3F

PROJECT MANAGEMENT
FOR FOOD FACTORIES
OF THE FUTURE



ENTIRE MASTER'S PROGRAM TAUGHT IN ENGLISH

1ST YEAR – program structure at IMT Atlantique



Students applying for the first year of the Master's program are invited to take a look at the program offered by ITM Atlantic

<https://www.imt-atlantique.fr/en/study/msc/pbpe-pm3e?p=dcTGY%3DLXWM1yBYFolyOT>

2ND YEAR SEMESTER 1 – program structure at Oniris



Food Engineering & Food Science – Basics

Food Safety & Quality Management – Basics

Product Innovation & Food Safety – advanced

Advanced tools & Methodologies for food characterization

Innovative Food Processing

Energy & Sustainability

Advanced Process Control

Communication & Leadership for Engineers

Laboratory Project

2ND YEAR SEMESTER 2 – Master Thesis –

Internship in Industrial Companies or in Research Units

APPLICATION PROCEDURE

Candidates can apply from October 15th to May 15th (extended to June 15th for European students).

- Applicants in the first year of the Master's degree are invited to apply via this platform : <https://pm3e.imt-atlantique.fr/>
- Applicants requesting direct access into the second year of the Master's degree are invited to send a complete application form to the following address : contact.master@oniris-nantes.fr

For the required documents, please consult the section Selection Procedure on the website.

<https://www.oniris-nantes.fr/etudier-a-oniris/les-masters/pm3f/>

PM3F

PROJECT MANAGEMENT
FOR FOOD FACTORIES
OF THE FUTURE



MSC TUITION FEES

1ST YEAR AT IMT ATLANTIQUE – MSC PBPE PM3E

<https://www.imt-atlantique.fr/en/study/msc/tuition-fees>



2ND YEAR AT ONIRIS – MSC PM3F



FRENCH STUDENT,

OR FROM EUROPEAN UNION COUNTRIES

OF THE EEA OR SWITZERLAND

Full: 10 000 € / 6 000 €*

Top Excellence: 8 000 € / 4 500 €*

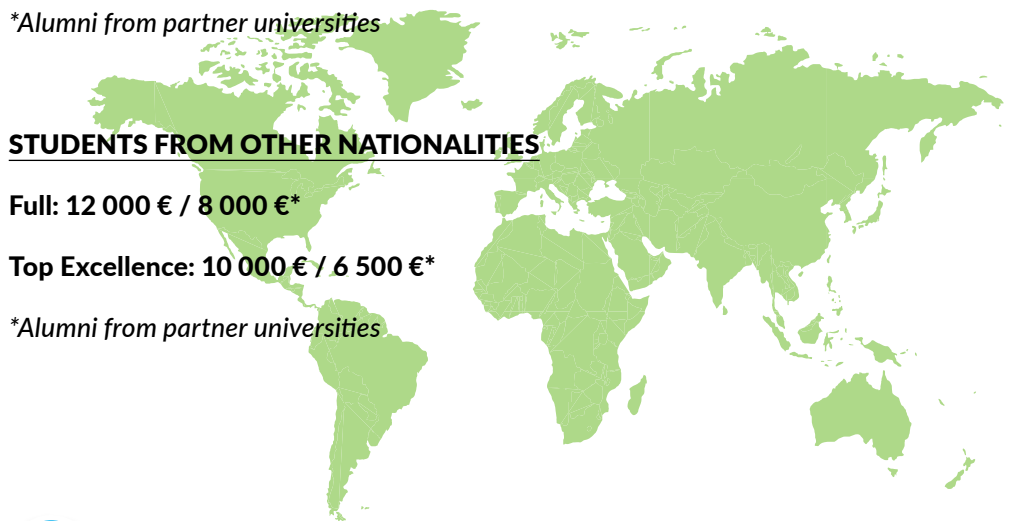
**Alumni from partner universities*

STUDENTS FROM OTHER NATIONALITIES

Full: 12 000 € / 8 000 €*

Top Excellence: 10 000 € / 6 500 €*

**Alumni from partner universities*



CONTACT

International Relations office : contact.master@oniris-nantes.fr
Coordinator - Prof. Lionel Boillereaux : lionel.boillereaux@oniris-nantes.fr
Website : <https://www.oniris-nantes.fr/etudier-a-oniris/les-masters/pm3f/>

The PM3E/PM3F M.S. Degree is accredited by the Ministry of Higher Education and Research and is credited 120 ECTS.

