

# FULL-TIME MASTER (MSc) IN MANAGEMENT

GLOBAL BUSINESS TRACK | DIGITAL BUSINESS & INNOVATION TRACK  
FINANCIAL MANAGEMENT TRACK



LEADERSHIP,  
ENTREPRENEURSHIP,  
STEWARDSHIP

# WHY NYENRODE?

## A BUSINESS CREATED BY BUSINESS AND FOR BUSINESS

Nyenrode was founded by prominent business leaders of international corporations such as Philips, Akzo, KLM, Shell and Unilever.

## PRACTICAL RELEVANCE

At Nyenrode you will shape your career from day one by applying solid academic knowledge into real-life business situations.

## PERSONAL DEVELOPMENT

The MSc journey goes far beyond the academics. It transforms young talents into academic professionals through a journey focused on your personal and professional development.

## A REWARD FOR LIFE

Combining sound theoretical knowledge, practical relevance and personal development will allow you to provide sustainable value for yourself, your business and your surroundings.

**BEST MASTER  
FOR TEN  
CONSECUTIVE  
YEARS\***

*\*Keuzegids Hoger Onderwijs 2019,  
The Netherlands, category  
Business Administration*



# YOUR MSc JOURNEY

## CHOOSE YOUR LOCATION

**Breukelen:** live on Nyenrode's international campus, join an active student association rooted in Dutch business traditions (NCV) with numerous social and professional committees and build a network of friends for life.\*

**Amsterdam:** study in the heart of the city. You will be surrounded by an international community of companies, startups and the Nyenrode incubator. You can participate in many social and professional activities. Besides, you have the option of living at OurDomain in Diemen Zuid.

## SHAPE YOUR MSC

The MSc in Management prepares you to tackle the current trends in the global business arena. You can choose one of three tracks based on your interests: Global Business track, Digital Business & Innovation track, Financial Management track.

*\* Traveling across both campuses might be required.*

**CURIOUS ABOUT THE PROGRAM? VISIT US DURING ONE OF OUR EVENTS.**

**CHECK [NYENRODE.NL/FTMSC](https://nyenrode.nl/ftmsc) FOR MORE INFORMATION.**



# FULL-TIME MASTER (MSc) IN MANAGEMENT

The Full-time Master (MSc) in Management is a 16-month journey that prepares you to become your best self and enter the labor market as a skilled starter.



## FOCUS ON YOUR GROWTH

Your MSc experience begins with the foundations needed to succeed in business. During the Pre-Master we cover topics such as Organizational Behavior, Leadership Development and Finance. After successful completion of your Pre-Master the core courses begin.

You continue your journey by deepening your knowledge in one of three tracks\*, that also includes the “Global Immersion Module”.

You conclude the program with your thesis on a topic of your choice.

*\* Requirements to access the different tracks apply.*

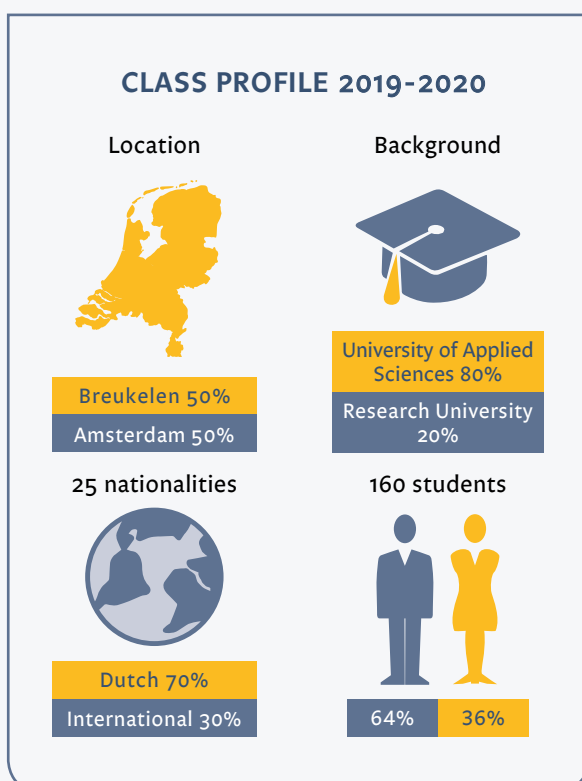


## SHAPE YOUR OWN DEVELOPMENT

During the Personal Leadership & Career Development course, you will be trained as a business consultant for nine months. You will work in teams to solve a real-life consultancy project for a company in your field of interest. This is supported by Community Gatherings on Leadership, Entrepreneurship & Stewardship.

The Personal Leadership & Career Development course will allow you to build skills such as CV writing, professional pitching, conflict resolution and coaching methodologies.

You can even take Dutch language courses if you are an international student interested in pursuing a career in the Netherlands.





NYENRODE  
BUSINESS UNIVERSITEIT  
AMSTERDAM



# PRACTICAL INFORMATION

## ADMISSION

### 1 Submit your application package that should include:

- Copies transcripts & bachelor diploma (if available in any field)
- CV
- Admissions test – Nyenrode Admissions Test\* or GMAT or GRE.
- English proficiency test - TOEFL 91+ or IELTS 6.5 or Cambridge Advanced C1.
- Cover letter

### 2 Personal Assessment

- We will assess your application.
- Diplomas from outside of the Netherlands will be checked by Nuffic (Dutch government).
- You will be contacted for a personal admissions interview.

*The duration of this step varies.*

### 3 Final decision

If your application is successful, you will be offered a place at Nyenrode. You will receive an acceptance letter with more details.

### 4 Register

You must register for the program to guarantee your spot.

*\*The Nyenrode Admissions Test is in English & will be scheduled after submitting your application package.*



## EVENTS

Learn more about the MSc in Management during one of our upcoming events:

- Open Day / Evening
- Business Game
- Personal Information Session

More event details on [nyenrode.nl/ftmsc](https://nyenrode.nl/ftmsc)

## KEY DATES

- First application deadline: (no application and admission's test fee)  
1 April 2021
- Last application deadline:  
15 June 2021 (Non-EU applicants)  
30 June 2021 (EU applicants)
- Start of the program\*:  
23 August 2021

## OTHER IMPORTANT DATES:

- Summer course: 2 - 13 August 2021
- Introduction Student Association\*\*:  
18 August 2021

*\*Students with a Research University (WO) Bachelor's degree in Business may apply after 30 June and start the program in January 2022.*

*\*\*Only students in Breukelen*



## INVESTMENT

**Tuition fee per semester:** €9,750 (3 semesters total)

Application + Admission's test fee (before 1 April) €0

Application + Admission's test fee (after 1 April) €500

**Extension of thesis (optional):** €2,075

**Accommodation:** Breukelen\*\* approx. €350 per month

Amsterdam approx. €800 per month

*Books and travel costs of Global ImmersionModule not included. \*\* Students who choose the Breukelen location are recommended to live on campus and share a room.*



**“CONTACT US FOR MORE INFORMATION ABOUT THE PROGRAM AND UPCOMING EVENTS.”**

**MILOU VAN MUILEKOM & AMBER OVERBOSCH**  
PROGRAM ADVISORS - [FTMSC@NYENRODE.NL](mailto:FTMSC@NYENRODE.NL)

# CURRICULUM



## PRE-MASTER 22 ECTS





SUMMER COURSE (OPTIONAL)	ACADEMIC READING & WRITING	BUSINESS RESEARCH	BUSINESS STATISTICS
ORGANIZATIONAL BEHAVIOR	MARKETING STRATEGY	MANAGERIAL ECONOMICS	FOUNDATIONS OF FINANCE

## MASTER OF SCIENCE IN MANAGEMENT 63 ECTS

### CORE COURSES



MANAGEMENT SCIENCE		DIGITIZATION IN BUSINESS & SOCIETY
OPERATIONS & SUPPLY CHAIN MANAGEMENT	BUSINESS STRATEGY AND ALIGNMENT	MANAGERIAL FINANCE
<b>TRACK</b> GLOBAL BUSINESS	<b>TRACK</b> DIGITAL BUSINESS & INNOVATION	<b>TRACK</b> FINANCIAL MANAGEMENT
<b>TRACK</b> GLOBAL STRATEGY	<b>TRACK</b> CONSUMER BEHAVIOR IN DIGITAL SETTING	<b>TRACK</b> ADVANCED CORPORATE FINANCE
<b>TRACK</b> INTERNATIONAL TRADE & NEW ECONOMIC POWERS	<b>TRACK</b> BIG DATA, DATA ANALYSIS & BUSINESS INTELLIGENCE	<b>TRACK</b> INTERNATIONAL MONEY & FINANCE
<b>TRACK</b> ENTREPRENEURSHIP	<b>TRACK</b> MANAGEMENT CONTROL & SECURITY OF DIGITAL VENTURES	<b>TRACK</b> MERGERS, ACQUISITIONS & PRIVATE EQUITY
<b>TRACK</b> INNOVATION AND DIGITALIZATION (INCL. GIP)	<b>TRACK</b> DIGITAL BUSINESS TRANSFORMATION (INCL. GIP)	<b>TRACK</b> ASSET MANAGEMENT (INCL. GIP)
 GLOBAL IMMERSION MODULE 		
RESEARCH IN BUSINESS ADMINISTRATION		
THESIS		



Curriculum is subject to change. The tracks offered in each location will be announced during the Pre-Master phase. Students enrolled in the program in Amsterdam are eligible to join tracks offered only in Breukelen (commuting time of approx. 45 minutes) Students interested in following an internship will be required to prolong their studies.



**CURIOUS ABOUT THE MSc IN MANAGEMENT?**  
CONTACT US TODAY

NYENRODE BUSINESS UNIVERSITEIT, STRAATWEG 25, 3621 BG BREUKELN, THE NETHERLANDS  
NYENRODE BUSINESS UNIVERSITEIT, KEIZERSGRACHT 285, 1016 ED AMSTERDAM, THE NETHERLANDS

✉ [FTMSC@NYENRODE.NL](mailto:FTMSC@NYENRODE.NL) ☎ +31 (0)346 291 731

📘 NYENRODEBU 🌐 NYENRODEBU 📺 NYENRODEBU

**[NYENRODE.NL/FTMSC](https://www.nyenrode.nl/ftmsc)**