



INSEAD



# Master in Management Programme

The Ideal Launchpad for Your Global Career



The Business School  
for the World®



# The INSEAD MIM Advantage

The INSEAD MIM aims to empower the next generation of well-rounded, agile-thinking and innovative individuals who are ready to make a positive impact in today's society.

## An Exceptional Future Awaits

The INSEAD Master in Management (MIM) programme combines an innovative learning approach with a problem-solving orientation. The 14 to 16-month intense and diverse programme is designed to equip young graduates with a holistic set of skills to launch a successful career in any work environment.

**22**  
Average Age

**0 – 2**  
Year(s) work experience  
(Includes internships, externships & fellowships)

**80+**  
Class size\*

**20+**  
Nationalities\*

\* Expected Class of 2021

### Top-ranked Business School

As one of the world's leading and largest graduate business schools, INSEAD's master programmes are consistently ranked amongst the top by the Financial Times.

### Global Community

Join a global network of over 58,000 influential alumni working in more than 170 countries across the world.



### International Exposure

Immerse yourself in a truly global experience alongside international classmates and faculty, and travel across continents.

### Practical Application

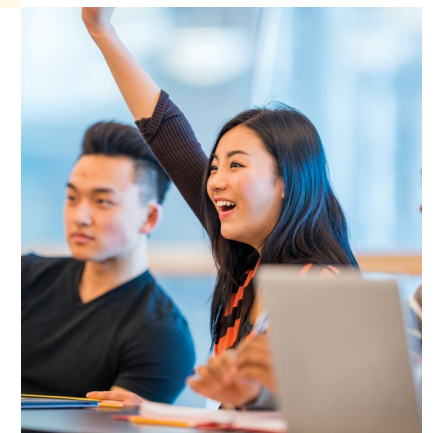
Experience a fast-paced succession of classes delivering cutting-edge knowledge, workshops and experiential learning blocks that put to the test classroom learning to real-life business situations.

### In-demand Skills

Acquire relevant skills that are in demand by employers and will set you up for success in your first job and beyond.

### Access to Top Employers

Gain access to top recruiters and diverse roles in a broad range of industries.



# Learn From Industry Experts

With a combination of talent and global expertise, our faculty enlivens the classroom experience through a variety of teaching styles.



“ Can businesses make profit and yet act with care for the greater societal well-being? The Business and Society course will tie in the topics covered in the Financial Reporting, Managerial Accounting, Valuation, and Applied Microeconomics classes, and provide answers to align firm actions and successful societies. ”

### Mark Stabile

Professor,  
Economics  
The Stone Chaired Professor in  
Wealth Inequality



“ The combination of Big Data and major advances in Machine Learning have made it a necessity for businesses to rely on people who understand how to best use data and best work with “intelligent machines”. We will learn to be most effective in the world of data, AI, and technology with courses like Data Analysis and Data Science for Business. ”

### Theodoros Evgeniou

Professor,  
Decision Science and  
Technology Management



“ The future of organisations depends on their ability to constantly reinvent themselves through innovation, be it human-centred innovation, research and development, or fostering new ways to operate in order to make sustainability across stakeholders a priority.

We will engage around the topic of innovation during the field trip to the country that has the highest number of patent applications on inventions – China. ”

### Rose Luo

Professor,  
Entrepreneurship and Family Enterprise



“ Human capital is the greatest asset of organisations. What makes the difference between a successful team, or organisation, and one that is struggling often relies on how people behave and interact. In Social Psychology, we will study these interactions, and explore how great teams – and great leaders are built. ”

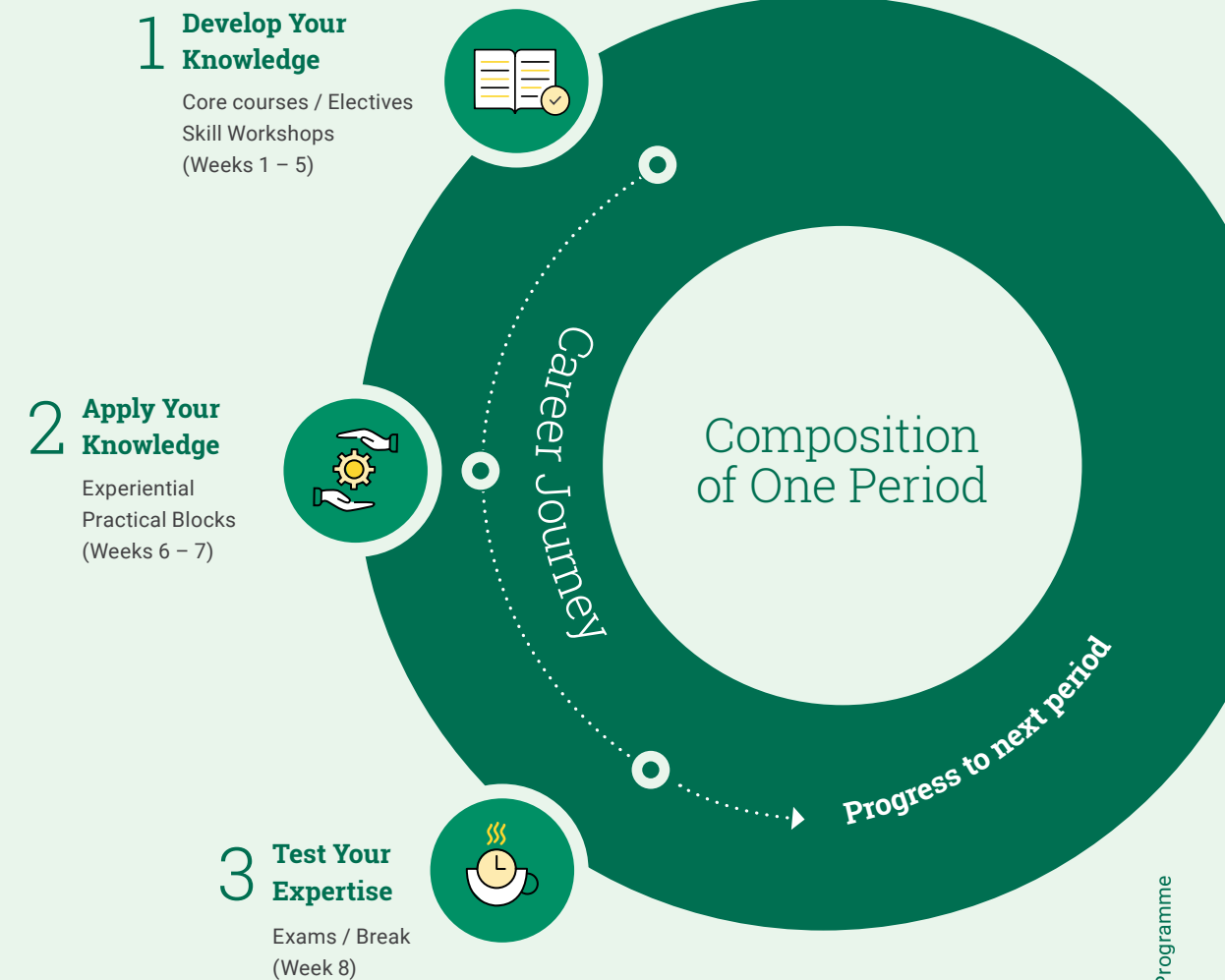
### Eric Luis Uhlmann

Associate Professor,  
Organisational Behaviour

# An Enriching Learning Environment

The INSEAD MIM is a 14 to 16-month programme. The programme starts with a rigorous 10-month curriculum, and concludes with a 4 to 6-month professional exposure component.

The curriculum consists of five periods, each lasting eight weeks and concluding with exams. Core courses or electives take place during the first part of the programme, which provide you with a robust foundation of key management disciplines. There are also skill workshops to equip you with crucial professional skills that are most sought after by employers. In the second part, you will be able to apply what you have learnt in the classroom through experiential practical blocks.



# Stand Out From the Crowd

		10 MONTHS				4 – 6 MONTHS		
		FONTAINEBLEAU CAMPUS		SINGAPORE CAMPUS		WORLDWIDE		
		SEPTEMBER		JULY				
Period	0							
	Teaching & Workshops	<b>Online Content</b> <ul style="list-style-type: none"> <li>• Simulations</li> <li>• Fundamental Courses</li> <li>• Language Courses</li> <li>• Career Launch</li> </ul>	<b>3 Core Courses</b> <ul style="list-style-type: none"> <li>• Data Analysis</li> <li>• Financial Reporting</li> <li>• Marketing</li> </ul>	<b>3 Core Courses</b> <ul style="list-style-type: none"> <li>• Data Science</li> <li>• Valuation</li> <li>• Applied Microeconomics</li> </ul>	<b>Optional Field Trip (Abu Dhabi)</b> ✈️	<b>3 Core Courses</b> <ul style="list-style-type: none"> <li>• Managerial Accounting</li> <li>• Process &amp; Operation Management</li> <li>• Business &amp; Society</li> </ul>	<b>Optional Field Trip (China or the USA)</b> ✈️	<b>6 Electives</b> <p>Choose your electives from a wide range of topics such as Innovation, Entrepreneurship, Digital and Data, Sustainability, Finance and more.</p>
Practical		<b>2 Workshops</b> <ul style="list-style-type: none"> <li>• Integrated Problem Solving</li> <li>• Structured Communications</li> </ul>	<b>1 Workshop</b> <ul style="list-style-type: none"> <li>• 4th Language (Coding Language)</li> </ul>	<b>1 Workshop</b> <ul style="list-style-type: none"> <li>• Presentation (Charts &amp; Data)</li> </ul>	<b>1 Workshop</b> <ul style="list-style-type: none"> <li>• Effective Communications</li> </ul>	<b>1 Workshop</b> <ul style="list-style-type: none"> <li>• Project Management &amp; Agility</li> </ul>		
			<b>1 Practical</b> <ul style="list-style-type: none"> <li>• Leveraging Big Data</li> </ul>	<b>1 Practical</b> <ul style="list-style-type: none"> <li>• BBB Deals / Valuing Innovation</li> </ul>	<b>2 Practicals</b> <ul style="list-style-type: none"> <li>• Business Model Innovation</li> <li>• Doing Business in the Middle East</li> </ul>	<b>1 Practical</b> <ul style="list-style-type: none"> <li>• Blue Ocean and Innovation in China and/ or the USA</li> </ul>	<b>1 Practical</b> <ul style="list-style-type: none"> <li>• Sustainable Development Goals (SDG) Boot Camp</li> </ul>	

Subject to visa requirements ✈️  
Curriculum is subject to change





## Launching a Successful Career

The global team at INSEAD's Career Development Centre (CDC) is committed to helping MIM students find their career ambitions and successfully navigate today's job market. The CDC partners with students in their career searches, offering support through individual career coaching and a dedicated career programme, recruitment expertise from employer

engagement specialists, and engagement activities with alumni and recruiters.

Through the three-step Career Launcher – Assess, Aim and Accelerate, the CDC helps you establish a solid foundation for an effective take-off.



## Your Journey Starts Here

### Admissions Criteria

The MIM Admissions team is looking for candidates with intellectual curiosity, personal qualities to contribute to the many INSEAD activities and very strong international motivation.



#### ABILITY TO CONTRIBUTE

How you can contribute to the INSEAD experience during and after the programme



#### ACADEMIC PERFORMANCE AND ABILITY

Good academic record & GMAT or GRE results



#### INTERNATIONAL MOTIVATION

Adaptability and flexibility in a multicultural environment

### Admissions Process

All elements of your application will be thoroughly reviewed by the admissions team. The selection process will take approximately up to seven weeks from the date of completed application submission.

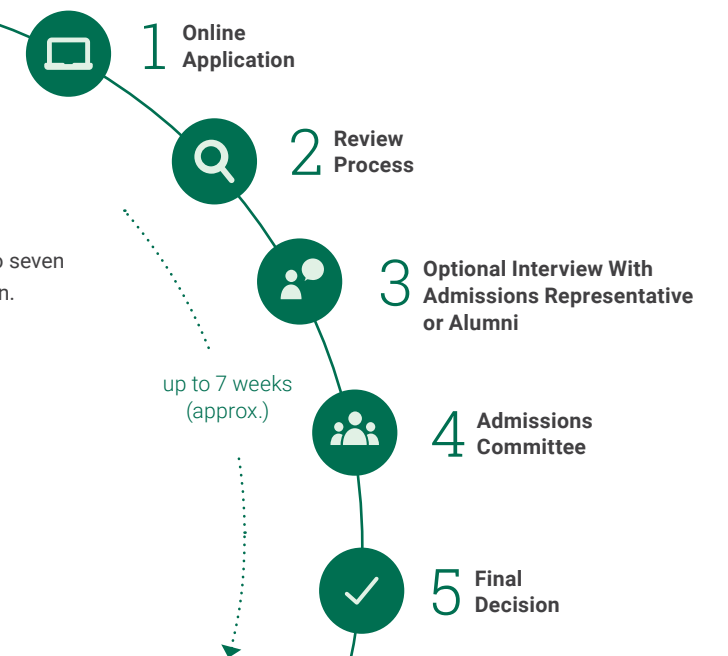
### Application Deadlines

We operate a rolling admissions process with five deadlines.

The final decision will be communicated up to seven weeks after the completion of your application.

#### September 2020 Intake

Round	Apply by
1	09 Oct 2019
2	11 Dec 2019
3	12 Feb 2020
4	15 Apr 2020
5	03 Jun 2020





# Financing and Scholarships

Tuition fees for the September 2020 intake are €47,500.

## Scholarships

The INSEAD MIM yields a lifetime of dividends, both professionally and personally. Pursuing a MIM programme is an investment that needs to be carefully considered and the MIM Financial Aid Office offers advice and support in planning your financing for the INSEAD MIM programme.

INSEAD offers the following types of scholarships:



### DIVERSITY SCHOLARSHIP

Granted to candidates who bring diversity to the class in terms of background, personal experience and profile



### FINANCIAL FELLOWSHIP

Awarded to candidates who demonstrate financial need



### ACHIEVEMENT SCHOLARSHIP

Focuses on excellence in academics and personal achievements

All admitted candidates will automatically be considered for scholarships (no separate application required). Successful candidates will be notified within one week of their admission to the programme if they have been awarded a scholarship.

Admitted students are also eligible to apply for tuition financing from Prodigy Finance and Brain Capital.



[www.braincapital.de](http://www.braincapital.de)  
[www.prodigyfinance.com](http://www.prodigyfinance.com)



**“The INSEAD MIM will provide you with an opportunity to embark on an intense journey to acquire the skills, knowledge, practice and mindset you need to succeed in a global career. You will undertake this journey with a diverse class, and be enriched by different perspectives and different views on the world. Ultimately, what you will truly discover is yourself: what you want to achieve in your life, your true potential, and who you truly want to be.”**

**Thibault Séguret**  
Programme Director  
INSEAD Master in Management

## INSEAD Europe Campus

Boulevard de Constance  
77305 Fontainebleau Cedex, France  
T +33 1 60 72 40 00

## INSEAD Asia Campus

1 Ayer Rajah Avenue  
Singapore 138676  
T +65 6799 5388

## INSEAD Middle East Campus

Al Khatem Tower, Al Maryah Island  
ADGM Square  
P.O. Box 48049  
Abu Dhabi - UAE  
T +971 2 651 5200

## INSEAD San Francisco Hub for Business Innovation

224 Townsend Street  
San Francisco, CA 94107, USA

[insead.edu/mim](https://www.insead.edu/mim)



Printed by INSEAD on PEFC™ certified paper