

# Better at Bath

**Master's** Prospectus 2021



UNIVERSITY OF  
**BATH**

**Top 10  
UK university**

The Guardian 2020  
The Complete University  
Guide 2021



**Top 5 for graduate  
prospects 2020**

The Times and Sunday Times  
Good University Guide 2020

[www.bath.ac.uk](http://www.bath.ac.uk)

Better at  
**Bath**



# Welcome to the University of Bath



On behalf of the University community, it is a great pleasure to invite you to consider studying at the University, and to assure you of the warmest of welcomes were you to join us.

As I write this, we are, globally, in a time of great challenge; COVID-19 has had a devastating impact worldwide. At the University we have been supporting our students through this crisis; helping our local community; and sharing our expertise – globally – helping to boost understanding of the pandemic and give meaningful shape to our fight against the coronavirus (see page 24).

And now we are preparing to deliver an inspiring student experience for our 2020 cohort, with safety and wellbeing at its core.

This prospectus is for September 2021 entry and, of course, we all hope that by then the impact of COVID-19 on our lives and endeavours will have significantly lessened. Yet it is most certainly our ambition that the new learning environment we are envisaging now will provide an opportunity for embedding those employability skills which will be most sought after following the present crisis: agility, digital proficiency, collaboration on any platform, and a strong sense of seizing opportunities to work for the common good in a changing world.

To choose Bath for Master's level study is to join an innovative and internationally diverse community. We'll seek to inspire you and to enrich you intellectually; to help you take what you learned in your first degree or from your work life and build on it to achieve your ambitions; in short, to help you to develop as a person and to achieve beyond your expectations.

Bath is known for excellence in teaching and research, for enabling a superb student experience, and for providing outstanding preparation for later life. Our staff are international experts in their subject areas and use their research and discoveries to ensure that our teaching incorporates the most relevant topics and reflects latest understanding. As you take this next step to postgraduate study, we will help you to succeed whether you are looking to enhance your career development or gain further subject expertise.

Our vibrant campus, right on the edge of Bath, offers an exceptional range of sporting, social and cultural opportunities – including ones that are especially for postgraduates. And the city itself, with its striking architecture and melding of cultures, is the UK's only entire city on UNESCO's world heritage list. It provides a wonderful environment in which to enjoy a most enriching student experience.

And if you choose one of our online or distance learning courses, you'll be part of a global community of learners and forge close links with Bath's outstanding academic experts. You will have access to a range of innovative online tools and support, and be able to browse the University's extensive online library from day one of your studies.

I hope this prospectus provides a welcoming taste of what to expect at the University of Bath. I am confident that you will be excited and inspired by the opportunities that our campus presents. If you're not able to visit in person before you make your decision, I do hope that you join us at one of our virtual open days. Please do get in touch with our academic and professional services staff if you have any questions about the course you are considering, the admissions process or life at Bath.

We look forward to the possibility of you joining our very special community.

A handwritten signature in black ink that reads "I. H. White".

Professor Ian H White FREng  
Vice Chancellor



## **Better at Bath**

Why Bath?	10
What our students say	12
Choosing your course	14
Your career	16
Our alumni	18
Your learning	20
Inspiring research	22
Covid-19: The University adapts	24

## **Living and studying in Bath**

Why we love the city of Bath	28
Our campus	32
Accommodation	36
Outside your studies	38

## **Supporting you**

Support and welfare	46
Support for international students	48

## **Next steps**

Fees, funding and scholarships	52
Applying to Bath	54

## **Course finder** 55

## **Visit us** 66

# Better at Bath

Join a world-class university in a world heritage city. We will help you succeed with your master's degree whether you want to enhance your career prospects or further your subject expertise.



# Why Bath?

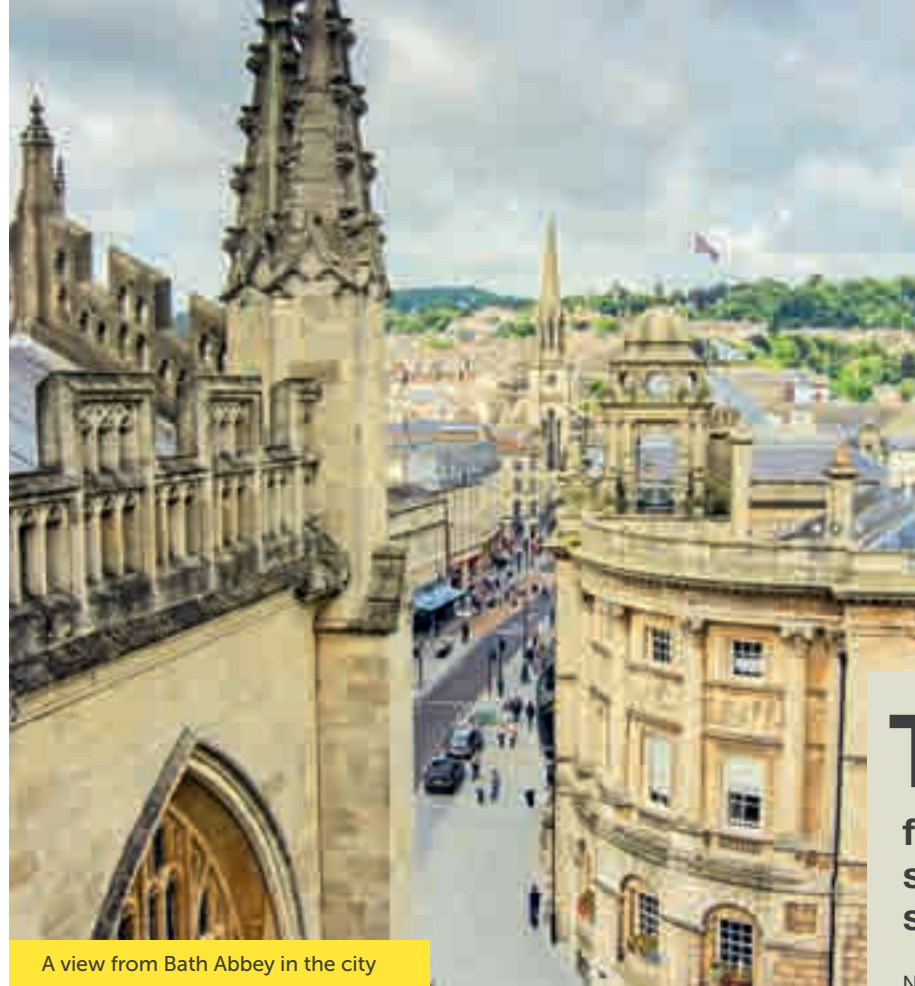
**TEF Gold**

UK Government's  
Teaching Excellence  
Framework

**Top 5**  
for graduate  
prospects\*

The Times and Sunday Times  
Good University Guide 2020

\*Rankings based on undergraduate data



A view from Bath Abbey in the city

**Top 10**  
for overall  
student  
satisfaction\*

National Student  
Survey 2020

\*Rankings based on undergraduate data

**Top 10**  
UK University\*

The Guardian  
University Guide 2020

The Complete  
University Guide 2021

\*Rankings based on undergraduate data



The Parade on campus

**4th**  
for employment  
within six  
months of  
graduation\*

The Guardian  
University Guide 2020

\*Rankings based on undergraduate data



**87%**  
of our research  
is classed  
world-leading  
or internationally  
excellent

The Research Excellence  
Framework – REF 2014

## What our students say



**"My course develops all the professional and soft skills required to advance quickly and lead within industry."**

**Martin Barnett**

MSc Engineering Business Management



**"I particularly like the teaching at Bath. My personal tutor is very helpful in guiding me."**

**Mohd Umair Khan**

MSc International Development with Economics



Find out more



Master's video:  
[go.bath.ac.uk/masters-video](https://go.bath.ac.uk/masters-video)



**"I chose Bath because of its world-leading academic reputation, close industry links and highly-ranked graduate prospects."**

**Becky Locke**

MSc Molecular Biosciences (Bioinformatics)



**"I immediately felt at home at Bath as the university atmosphere is very multi-cultural."**

**Katya Kowalski**

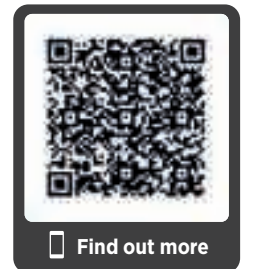
MSc Health Psychology



**"It was great to have mental health and academic support from the University's staff throughout my studies."**

**Lee Chen Yoong**

MSc Applied Clinical Psychology



Find out more

Student blogs:  
[go.bath.ac.uk/pgt-blogs](https://go.bath.ac.uk/pgt-blogs)

# Choosing your course

Make the transition from an undergraduate to a postgraduate course. Whether it be on-campus teaching or part-time online, your degree will now be more academically rigorous and specialised.

Your postgraduate degree will allow you to specialise in an area that matches your interest and your career ambitions. You can also choose to build on your knowledge gained in your undergraduate studies or to study something completely different.

We offer a wide range of master's degrees, including full-time, part-time and online courses to suit your lifestyle. You will be able to study subjects in the areas listed right.

- Architecture and civil engineering
- Business, finance, management
- Chemical engineering
- Computer science
- Drug discovery
- Economics
- Education
- Electronic and electrical engineering
- Health  
(health and wellbeing, sport and exercise medicine and sport physiotherapy)
- Interpreting and translating
- Mathematics
- Mechanical engineering
- Molecular biosciences
- Politics and international studies
- Psychology
- Social and policy sciences



Our taught master's are listed on pages 55 to 61

For more information check our website at [go.bath.ac.uk/pgt-study](http://go.bath.ac.uk/pgt-study)

This prospectus does not include details of research degrees. To find out more about them visit us at [go.bath.ac.uk/postgraduate-research](http://go.bath.ac.uk/postgraduate-research)

Take a look at the different types of master's degrees we offer and choose which route is best for you.



## MA Master of Arts

## MSc Master of Science

## MBA Master of Business Administration

## MRes Master of Research

The taught courses will either:

- **Build on your undergraduate studies** exploring your subject in more depth. You will be expected to work more independently and think more critically.
- **Complement your undergraduate degree** with knowledge, tools and skills in a different subject area – for example by taking an MSc in Computer Science or an MSc in Management.

- A postgraduate course for those with at least three years of full-time, post-graduation professional or managerial work experience. An Executive MBA requires 5 years' work experience.
- An MBA can prepare you for a senior management role, can accelerate your career and help you become a better leader. It is a great option if you want to start your own business.

- A taught course that combines the academic study of a particular subject with a comprehensive exploration of research methods.
- It is a qualification in its own right, but can be used as a preparation for a PhD- '1+3' (MRes +PhD) pathway.

## PG Dip Postgraduate Diploma

## PG Cert Postgraduate Certificates

- Qualifications at the same level of study as master's degrees, but they do not include a written dissertation.
- A PG Dip takes longer and is worth more credits than a PG Cert.



**“The support I received from the Careers Service team was so valuable. The workshops, resources and feedback from one-to-one appointments really helped me with my CV, applications and interviews.”**

**Mrudul Pankaj Mendke**  
MSc Data Science



## Your career

Boosting your employability skills and improving your career prospects are distinct benefits of completing a master’s degree. We offer courses with the job market in mind to help you develop the right skills to achieve your career goals.

### ■ Career advice and job searching skills

Our Careers Service team are here to help you with career planning and job search skills. You will have access to online resources and one-to-one appointments and careers events.

The service includes:

- one-to-one careers appointments
- advice on job search, CV writing, job applications and interview techniques
- workshops on all aspects of the recruitment process
- mock interviews and assessment centre activities
- support for psychometric tests
- access to MyFuture careers portal

### ■ Careers support linked to your course


You will benefit from a Careers Adviser working within your Faculty, so you can be assured of getting support tailored to your areas of interests and career ideas. Our extensive online resources include sector briefings and input from alumni working in relevant employment.

### ■ Connecting you to the employers

The Careers Service also arranges up to 400 employer recruitment events for the University each year – including career fairs. We work with large and small organisations, commercial, public sector, charity, and social enterprises, providing a wider range of potential future destinations. These events are excellent networking opportunities to help you build connections and explore the career opportunities open to you.

### ■ Open up global possibilities

Learning a language can increase your employability by opening doors across the globe and in international businesses. You can choose to learn a new language, brush up on your existing skills or improve your English language proficiency by taking advantage of our weekly language classes or by meeting with international students in our Language Exchange programme.

 [go.bath.ac.uk/careers](https://go.bath.ac.uk/careers)

# Our alumni

Studying at the University of Bath means belonging to a global network. Our alumni are proud of their Bath connection, and they want you to succeed too. Whatever you're aiming for, our former students want to help you get there.

Bath Connection is an easy way to take advantage of the support our graduate community offers. You can network with graduates all around the world to receive careers support, CV advice and interview tips.

You will find profiles of thousands of graduates around the world to speak to, including high profile execs, start-up owners and more. From asking a quick question about working for a particular organisation to finding a mentor for ongoing support, you will learn from someone who has 'been there already' and wants to help you succeed too.

International applicants: when you receive your offer of a place, you can access Bath Connection to connect with graduates who'll share their own experiences of studying at Bath with you.



[go.bath.ac.uk/pgt-bath-connection](https://go.bath.ac.uk/pgt-bath-connection)



Daphne Hsu

**Daphne Hsu, MSc in Management with Marketing, now Country Manager at Cookpad Taiwan**

Daphne Hsu, came to Bath from Taiwan to study MSc in Management with Marketing. She is currently the Country Manager for Cookpad Taiwan whose mission is to make everyday cooking fun. After graduating from Bath Daphne returned home where she launched and grew Uber/ Uber Eats Taiwan from the ground up.

"When studying at Bath, meeting students from various nationalities helped me develop a global mind-set and build an international network of like-minded people. Throughout my course projects I learned to work as part of a team and to improve my presentation skills. Both the experience and skills I acquired at Bath were essential for me to progress in my career."

**"Without my master's, I wouldn't have this career. It's as simple as that."**

Gabriel Harry

**Gabriel Harry, MSc Modern Applications of Mathematics graduate, now working at Health Education England**

"My master's degree gave me an advantage over other people both when applying for a role and performing the role itself, so every day I am grateful for my time at Bath. Without my master's, I wouldn't have this career. It's as simple as that."

**Ben Van Praag, MA TESOL, employee and doctoral student at the University of Bath**

"Undertaking a MA TESOL degree was the logical step in my teaching career development. It greatly enhanced my CV and complimented the teaching qualifications that I had already gained. This degree has successfully supported my applications for jobs in the UK and abroad. The degree gave me the theoretical insight into my field and provided me with the opportunity to develop as a researcher. I was able to publish my dissertation in a high impact journal, which would not have been possible without the guidance and support from the course tutors. As a result, I made the choice to continue my studies as a part-time doctoral student whilst working as the Skills Development Manager at the University of Bath."



Iasonas Bakas

**Iasonas Bakas, MSc Conservation of Historic Buildings, now works for Mann Williams, Consulting Structural and Civil Engineering**

"Through my MSc studies at Bath I developed a deep appreciation for conservation principles, and I got a thorough understanding of conservation techniques used in the UK. I also got introduced to the company I now work for."

# Your learning

We'll provide you with teaching of the highest quality, outstanding learning facilities and a skills development programme tailored to meet your academic and personal needs so that you can make the most of your postgraduate studies.

## ■ Teaching excellence

We know that by choosing to study for a master's degree, you are looking to gain a competitive edge in your chosen field. Our academic programmes are designed to provide both rigorous intellectual challenge and real-world relevance, giving you the opportunity to study with researchers and practitioners who are leaders in their field. Our staff are experts in their subject areas and use their industrial links, research and discoveries to ensure you are taught the most up-to-date topics.

We are constantly seeking to improve learning and teaching, acting on the feedback of our students to ensure their experience is as good as it can be. All of this contributes to our student success and employment rates, factors which were instrumental in us receiving the TEF gold award, indicating that the teaching at the university is of the highest quality in the UK.

## ■ Academic study facilities

We continuously invest in new teaching facilities, informal learning spaces and laboratories for our students. We are constructing a major new School of Management building which will include lecture theatres, seminar rooms, study and social space to enhance the learning experience of our students.

We are regularly upgrading our virtual learning environment to ensure that your learning materials, quizzes and recorded lectures are easily accessible and designed to complement your in-person teaching. On-campus teaching will be the main mode of delivery for full time Master's courses starting September 2021; but due to the need to teach fully online during the COVID-19 outbreak, we now have more virtual support than ever before to supplement your on-campus teaching, and it is going to stay that way.

Each of our Departments and Divisions have specialist facilities to support the learning on your course, as appropriate for the subject. This includes laboratories, observation suites, specialist software and more.

You will have access to our library, open 24/7, working around you and your studies. Alongside the library and general learning commons, we have dedicated postgraduate student informal learning spaces.

**"The teaching is of an exceptional standard."**

**Connor Perrin** MSc Machine Learning and Autonomous Systems



## ■ Skills development

In addition to subject specific-skills development embedded in your course, we offer a skills programme which is designed to meet your academic and personal development needs. This will help you get the best out of your studies, enhance your employability and achieve success in your future career, or in further studies, including doctoral studies.

Through our MySkills hub, you will have access to a range of online and face-to-face skills development opportunities covering five key areas – Academic, Employability, Languages, Digital and Personal skills. You can tailor your own development programme to fit flexibly around your academic studies and other activities.

## Develop skills your way

- One-to-one tutorials
- Workshops, talks and presentations
- Online resources and independent study

## Develop a range of skills

- Thinking critically to enhance your writing
- Creating well-written, clearly structured essays, reports and dissertations
- Giving polished and effective academic presentations
- Managing and analysing numbers, data and statistics
- Learning a new language or improving an existing one
- Using digital tools and resources, and managing your digital wellbeing
- Looking after your health and wellbeing and staying in a positive mind-set

## Employability-focused workshops

- Writing effective job applications and CVs
- Succeeding at interview
- Managing your time
- Making the most of volunteering
- Leading and managing projects



For more information on skills, visit [go.bath.ac.uk/pgt-skills-development](https://go.bath.ac.uk/pgt-skills-development)



# Inspiring research

Impactful research lies at the heart of what we do. We are focused on improving lives and changing our world for the better. We are ranked in the top 10 of British universities for research quality (The Complete University Guide 2020).

Postgraduate students work alongside some of the leading researchers in their field from across the globe. Strong links with industry, government, NGOs and policymakers provide unique opportunities for collaborations ensuring Bath postgraduate students' research has an impact far beyond academia.

87% of our research was ranked as world leading or internationally excellent according to the Research Excellence Framework (REF) exercise carried out in 2014. While at Bath, your studies will be informed by some of the most exciting and innovative ideas around, whether you are working to develop new drugs to treat breast cancer, collaborating with industry leaders such as Ford to develop fuel-efficient engines, or are involved in our Queen's Anniversary Prize-winning research into child poverty.

Enthusiasm and nurturing new research talent is one of our highest priorities. We have dedicated training centres for doctoral research students and around 2,000 current postgraduate research students.

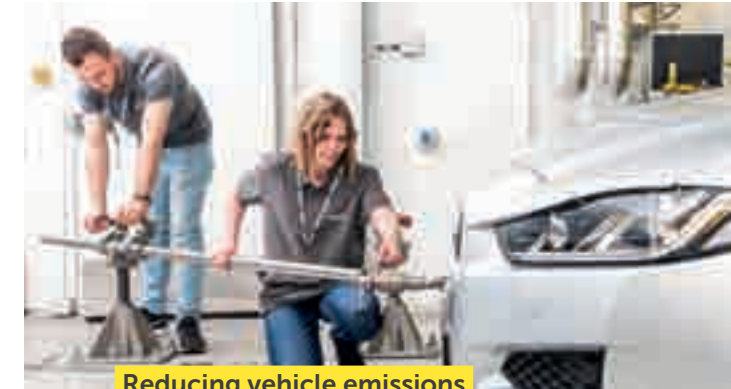


This prospectus focusses on master's courses. Find out more about our research degrees and what it is like to be part of our doctoral community at [go.bath.ac.uk/postgraduate-research](https://go.bath.ac.uk/postgraduate-research) and [go.bath.ac.uk/doctoralcollege](https://go.bath.ac.uk/doctoralcollege)



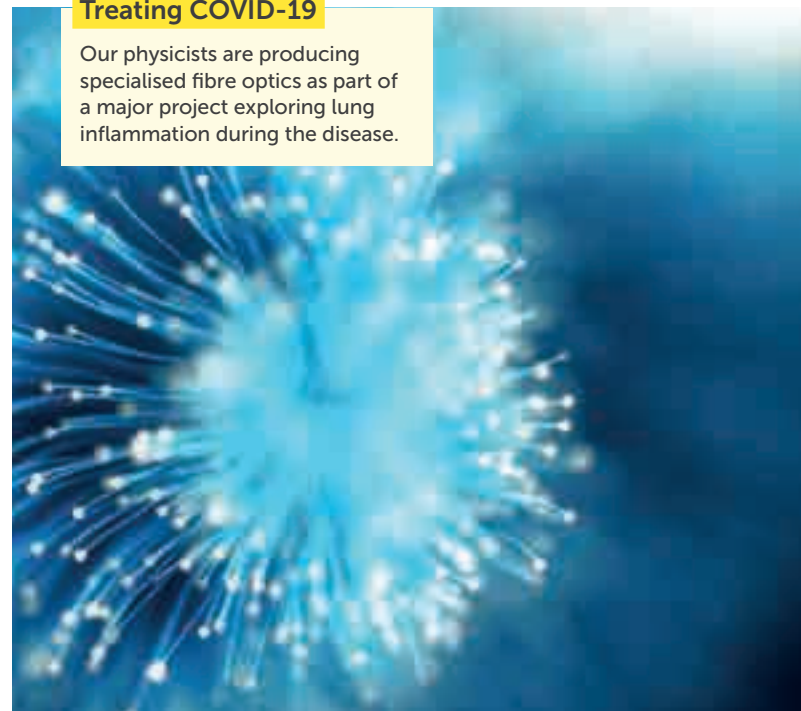
## Exposing the tobacco industry

We are part of a global alliance, exposing the activities of the tobacco industry to protect and enhance public health around the world.



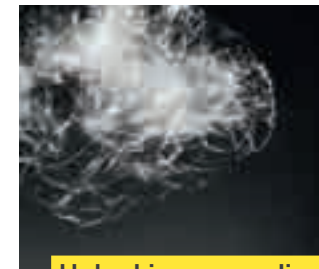
## Reducing vehicle emissions

Our long-standing research partnership with the automotive industry is helping us develop future generations of ultra-low emission vehicles.



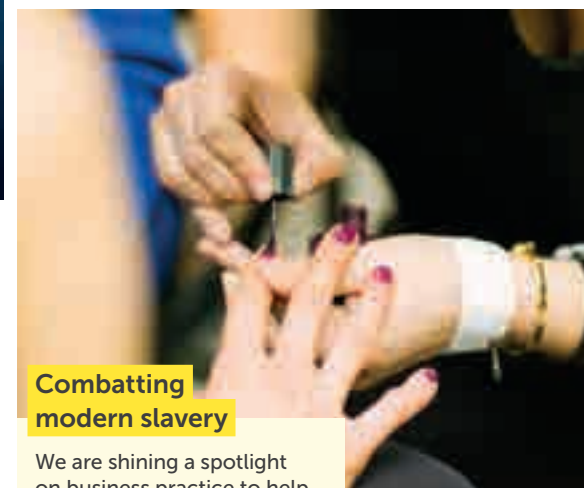
## Treating COVID-19

Our physicists are producing specialised fibre optics as part of a major project exploring lung inflammation during the disease.



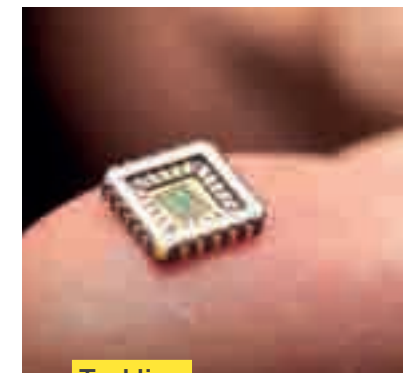
## Unlocking neurodiversity

We are developing new insights about neurodiversity through our Centre for Applied Autism Research and using them to inform activities like our autism summer school and employment school.



## Combatting modern slavery

We are shining a spotlight on business practice to help combat modern slavery.



## Tackling chronic diseases

Our physicists are successfully reproducing the electrical properties of biological neurons onto semiconductor chips, a first-of-its-kind achievement that will have enormous scope for medical devices and curing chronic diseases such as heart failure.



[go.bath.ac.uk/pgt-uob-research](https://go.bath.ac.uk/pgt-uob-research)

# COVID-19: the University adapts, supports and shares knowledge

When COVID-19 swept the globe, our University community responded quickly and in numerous ways – supporting our students, helping our local community and sharing our expertise.

## ■ Supporting our students

Our academic colleagues quickly moved to delivering lectures and seminars virtually; our students engaged with up to 10,000 hours of content per week throughout lockdown!

Students living in University-owned accommodation around the city were invited to move into campus accommodation; all students on campus received three free meals a day.

In response to the increased financial hardship faced by some of our students, we enhanced the availability of financial assistance, thanks to our alumni and friends' network. To date, nearly £100,000 has been donated to help the University's pandemic response.

To enhance wellbeing and retain a sense of community, our Student Services team moved all of their services online. These included a daily wellbeing drop-in service, mental health support, counselling, and other virtual sessions. The Students' Union set up a Corona Community Facebook page offering a daily programme of activities, including quizzes, exercise classes and cooking.



To find out more about student life during lockdown read our postgraduate student blogs: [go.bath.ac.uk/pgt-blogs](https://go.bath.ac.uk/pgt-blogs)

**"The University responded immediately to the Covid crisis. My department provided the necessary guidance, both for academic success and for mental wellbeing, and monitored our progress throughout the lockdown period. We were given all the resources to deal with the crisis. The University really cares about its community."**

**Flavia Olivieri**  
MSc Environmental Engineering

## ■ Helping our local community

In many cases working with local partners, our community helped keep people in our area physically fit, mentally active and socially engaged, and helped to protect frontline healthcare workers.

- Staff from the Faculty of Engineering & Design collaborated with the Royal United Hospitals Bath (the RUH), to make essential personal protective equipment (PPE). By late June the team had made over 100,000 items of PPE including face shields that achieved BSI certification, whilst a project with local sewing volunteers and other partners produced more than 2,200 medical gowns.
- Whilst the competitive efforts of our elite athletes and Sports Training Village users were paused, Team Bath continued to help people work out and keep in shape by offering free online classes. Several live exercise classes were streamed each week as part of a full timetable of fitness activities, as well as wellbeing talks giving tips and advice.
- Team Bath Netball training sessions, held online by player-coach and England international Shaw, were also made freely available for players and clubs around the world via Facebook, attracting thousands of participants every week.
- The University Arts Team based at The Edge produced online creative skills workshops, wellbeing classes, online yoga, dance fitness, choir sessions and more – all run by local tutors. The team also ran online interactive storytelling sessions inspired by University research, and 'Invent' craft sessions for children which fuse arts and science.

## ■ Sharing our expertise

Our academics were quick to share both their knowledge and their resources with the world, helping to boost understanding of the pandemic and give meaningful shape to our fight against the coronavirus. Our experts – including biologists, mathematicians and psychologists – featured in over 3,500 national and international media stories during the first 90 days of lockdown.

- Our mathematicians worked hard to make sense of the pandemic's numeric complexities, and to clearly explain these findings to the general public.
- Psychologists highlighted both the mental health risks of an extended quarantine and the importance of maintaining good hygiene to minimise virus transmission.
- Our health researchers devised invaluable exercise programmes to keep people aged 60+ active in lockdown.
- Biologists, and epidemiologists informed the public on every imaginable aspect of virus transmission and vaccine creation.
- Instrument specialists from the University's Material and Chemical Characterisation facility were tasked with checking the quality and purity of chemicals used in the manufacture of tests to diagnose the coronavirus.
- A group from the Centre for Photonics and Photonic Materials designed and built endoscopic devices as part of a major project to test new lung treatments for the disease.
- Experts from our School of Management shared their knowledge on how to lead in a crisis, exploring the consequences of the pandemic for business.



**Living  
and  
studying  
in Bath**

# Why we love the city of Bath

Bath is a Unesco World Heritage City known for its natural hot springs, striking architecture and fascinating history. But peek beneath the surface and you'll find a modern city, with experiences well beyond the ordinary.



The beautiful Bath skyline



The Roman Baths

## ■ Explore your world heritage city

Living in a historical city like Bath has many benefits, such as being surrounded by beautiful places to visit. The Roman Baths, Skyline Walk, and Bath Abbey are all worth a trip, as well as the various parks spread around the city.

Bath is known for its Roman links but the city was also home to founding numbers of the Suffragette movement and campaigners for social justice, such as Haile Selassie.



The city centre in bloom

## ■ Go for a bite to eat

From sushi and tapas to pizza and pies, Bath has hundreds of restaurants to suit your tastes. While there are several well-known chains, Bath is all about promoting independent businesses, and new places pop up all the time. Restaurants and cafés have student promotions on throughout the year, so remember to keep your NUS card handy!

## ■ Hit the shops

Bath's shops are scattered between intriguing side streets and picturesque alleyways - all within easy walking distance of one another. Most of the high street stores can be found in the Southgate Centre, with quirky artisan and vintage shops dotted throughout the city.



The city has a wealth of vibrant cafés

Milsom Street



**"I feel so lucky to be living in what is now my favourite city. Bath is both relaxing and beautiful."**

**Piyamon Nontarakchaisorn**  
MSc Marketing

**■ Get cultural**

Whether you are interested in history, science or art, the city has many museums and galleries to explore in your spare time. The city also has three cinemas for the film enthusiasts and three theatres, including The Theatre Royal, which frequently host plays straight from a West End run.

For a small city, Bath manages to host a huge amount of activities throughout the year. These include The Bath Festival (a two-week multi-arts event), Comedy Festival and Bath Fringe Festival to name but a few. Other events include the famous Bath Christmas Market.

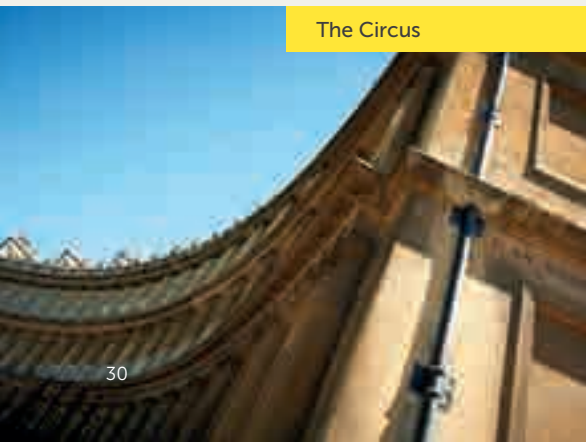
**■ After dark**

If you are looking for a quiet couple of drinks in a cosy bar or a big night, you're guaranteed a good time. Bath has a great nightlife and with lots of hidden gems for you to explore you'll never be stuck for something to do on an evening. There are several music venues in the city, including Komedia, who host hundreds of events a year, and the Pavilion which often serves as a warm-up venue for acts on their way to Glastonbury.

**■ Get active**

From paddle boarding on Pulteney Weir to hot air balloon rides over the Royal Crescent, Bath has a host of outdoor activities that can be enjoyed throughout the year. The city and surrounding countryside are perfect for walking, running and cycling. Our much-loved Bath Rugby Club hosts Premier League Rugby Union games throughout the season.

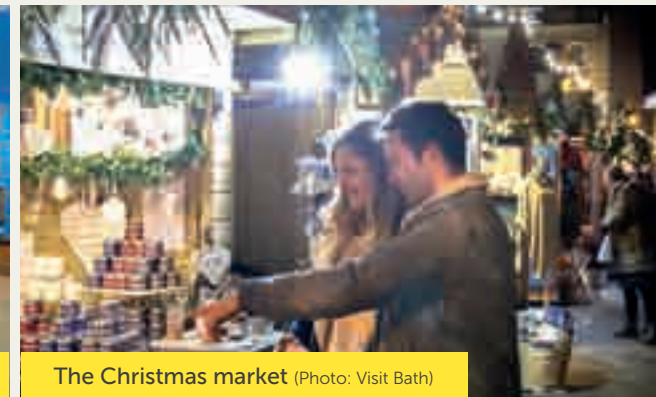
The Circus



The Royal Crescent



Victoria Art Gallery



The Christmas market (Photo: Visit Bath)



[www.visitbath.co.uk](http://www.visitbath.co.uk)



Stonehenge

**Going beyond Bath**

Bath is surrounded by beautiful countryside but if you want to explore a bigger city, catch the train from Bath Spa station and be in Bristol in 12 minutes and London in 80 minutes. The must-see monument of Stonehenge is only an hour away from Bath too!



## Our campus

A thriving community atmosphere and the natural tranquillity of the Somerset countryside. Ours is one of the safest campus sites in the UK and the first university in the country to win a national police-approved security award.





**“Fantastic atmosphere. Brilliant restaurants and cafés for relaxation. Great common rooms and library to study.”**

**Seeavash Keshavarzi**  
MSc Automotive Engineering



Our campus is the perfect place to meet with your friends, whether it is to study, have a bite to eat, or sit outside by our scenic lake. In addition to our library, Sports Training Village, award-winning Students' Union, arts centre and multi-faith chaplaincy centre, we have much more all within a five minute walk.

From burritos and noodles to pasta and salads, we have over 10 restaurants, bars and cafés that cater for all tastes.

There are over 160 clubs and societies so you will always have something to keep you occupied on campus.

### Campus facilities


Supermarkets  
Medical Centre  
Dental Centre  
Laundrette  
Post Office  
Computer shop  
Banks  
Restaurants and coffee shops  
Bars, pubs and a club

**Our library is open 24 hours a day, 7 days a week!**

**24/7**



### Transport

You can easily travel between the campus and the city, either by foot, bike, car or bus.

Buses run 24 hours a day during term time. It takes 10 to 15 minutes from the campus to the city.

A taxi with friends can cost as little as £2 each from the campus to the city.



# Accommodation

Make yourself at home in our beautiful city. We have a number of University and privately managed options for you to choose from right in the heart of Bath, and you'll always be close to a bus stop for easy access to campus.

## University managed accommodation

We offer accommodation for postgraduate students around the city. The main shops, restaurants, bars and cafés are all located within a short distance. All our accommodation is just a few minutes' walk from the bus stop, so you can get to campus quickly and easily.

Living in a university managed building means that everything is included in your rent and your accommodation is looked after by our experienced housekeeping team, leaving you more time to really focus on your studies.

If you are a new overseas, fee-paying postgraduate student and apply by the deadline, you are guaranteed accommodation. But it's not just overseas postgraduates who live in accommodation. Although we cannot guarantee a room to UK or EU postgraduates, please do apply – we do try to house as many students as possible.

We understand that every student is individual, so we provide a variety of accommodation options.

### We can offer

- Self-catered accommodation
- Single or double rooms
- Communal bathrooms or en-suite rooms
- Single and mixed-sex flats
- Family accommodation

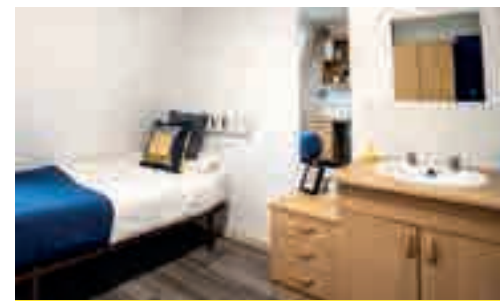
### Safety and security

To make you feel safe and at home our accommodation can only be accessed using swipe cards and we have dedicated Accommodation Security Officers available 24 hours a day, seven days a week. Our campus is also an accredited Secured Environment, giving you complete peace of mind.

All our rents include your bills, insurance cover for your belongings and high-speed Wi-Fi.



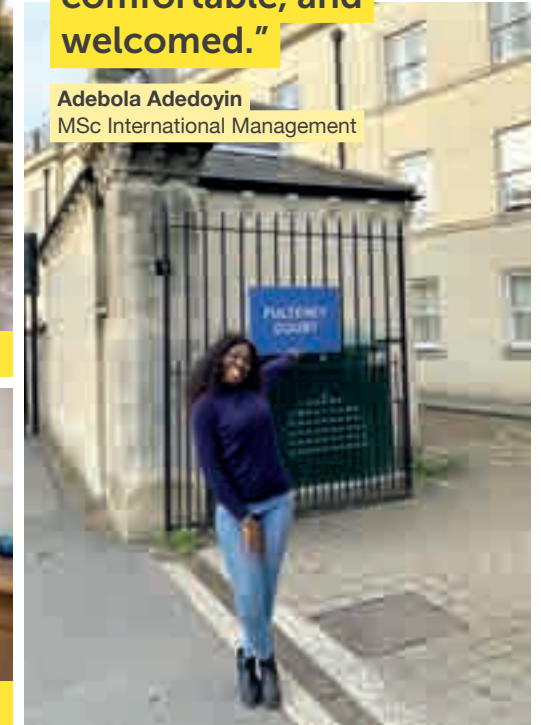
Canal Wharf accommodation



Pulteney Court bedroom

**“Pulteney Court is more than an accommodation, it's a community where people feel safe, comfortable, and welcomed.”**

**Adebola Adedoyin**  
MSc International Management



## Privately managed accommodation

All fee-paying postgraduate students can apply for private accommodation managed by Hello Student. If you are an overseas fee-paying student you will be guaranteed a room if you apply before the deadline.

The residences are all conveniently located close to the city centre and the University of Bath is only a short bus ride away. Your utilities, contents insurance and high speed Wi-Fi are all included in rent.

## Private renting

The Student Accommodation team offers a range of services to help you find private accommodation. If you choose to find housing in the private sector, you should make sure you allow for gas, electricity, water and internet, as these are not normally included in the rent.



Take a 360° tour of our accommodation options and find out more at: [go.bath.ac.uk/pgt-accommodation](https://go.bath.ac.uk/pgt-accommodation)  
☎ +44(0)1225 383111

# Outside your studies



# The Students' Union

Societies, groups, new experiences and personal development – there are so many ways to enrich yourself while studying with us. The Students' Union (The SU), a registered charity run by students, for students, is the heart-beat of everything extra-curricular.

Whether you're a keen cyclist, love to paint, have a passion for representing your peers or want a place to unwind at the end of a busy day, The SU is here to give you the opportunity to come out of Bath with more experiences than ever.



The SU Team

**"I love the atmosphere at the SU! I always look forward to meeting friends there on a Friday evening."**

Flavia Olivieri  
MSc Environmental Engineering



## ■ Events

Each year The SU puts on a range of events for everyone to join in with, as well as postgraduate-specific events too. From daytrips to dance classes, black tie events to pub quizzes, these socials throughout the year give you a great opportunity to give yourself a much-needed break.

## ■ Groups

With over 160 sports clubs and societies at your fingertips, it's hard not to find something to get involved with. There's everything from Mountaineering to CoffeeSoc as well as Faith and Cultural groups, volunteering, and Diversity and Support groups. Our fantastic SU Groups are open to everyone, regardless of ability so why not try something new?

## ■ Support

The SU has an independent Advice & Support Centre with professional advisors who are on-hand to guide and support you with any problems during your time at Bath. They offer confidential, independent and non-judgemental advice and support. A number of support groups run by students organise campaigns and events for awareness or action purposes. The SU also offers peer support through peer mentoring and peer assisted learning, as well as skills training opportunities.



Find out more:  
[go.bath.ac.uk/pgt-su](http://go.bath.ac.uk/pgt-su)

## ■ Postgraduate Officer

Bath is one of only a handful Students' Unions in the country with a dedicated Postgraduate Officer, and we really care about making sure all postgrads feel represented, welcomed and supported. We have a wide range of services specifically for postgrads, from advice and study support to social activities and sports, volunteering and other personal development opportunities.

**"As Postgraduate Officer, I have the opportunity to ensure that all aspects of Postgraduate life at Bath are the best it can be by making our voices heard at all levels of the University"**

Fritz Ho Postgraduate Officer 2020/21

## ■ Use your voice

The SU is run for students, and by students. Representation is at the heart of everything we do, and student involvement is essential to this. You can nominate yourself to be a Postgraduate Academic Representative, or a member of the postgraduate executive committee that works to improve study and research experiences for everyone. If you want to get involved in postgraduate community building, you can stand to be a Hall Representative to work with The SU in ensuring everyone feels welcomed.

# Outside your studies



**“The sports facilities and events organised by the SU really helped me to settle in and meet lots of different people.”**

**Tokoni Olobio**  
MSc Sustainability and Management

## Sport, health and fitness

Staying active couldn't be easier with access to our first-class sporting facilities seven days a week. Whether you're serious about your shuttle-runs or just want to de-stress and socialise, our facilities are open to all.

Training is available in a range of activities in an open and friendly environment. Our team of coaches, sports science personnel and physios work with a wide range of performers from student teams up to Olympic level.

Bath Active, the student recreational sport programme offered by The SU, provides free and low commitment sport and physical activity sessions, including opportunities especially for postgraduate students. These activities range from yoga to touch rugby, zumba to football. There are also personal development opportunities through coaching and volunteering.

We have a big fitness offering through our Team Bath Gym & Fitness Centre\*, including around 100 classes and group exercise options to choose from every week. Students can also access our Olympic-sized swimming pool, tennis courts and athletics tracks – both indoor and outdoor.

We also have one of the leading high-performance environments in Europe, hosting around 250 international-level athletes and national and regional squads across 10 sports.

As a postgraduate student you will also have the opportunity to watch high-profile events and top-class sport hosted on campus.

### Our facilities and services

	Team Bath Gym and Fitness Centre*, expanded across three floors		Water-based hockey and general purpose all-weather pitches/areas
	50m Olympic legacy swimming pool		Football and rugby pitches
	Floodlit eight-lane all weather athletics track		300 square metre judo dojo
	Indoor athletics hall featuring a 132m sprint straight		Fencing salle including eight pistes
	Multipurpose sports hall including 12 badminton courts		Squash courts
	Eight-court indoor tennis hall plus four acrylic, four artificial clay and two clay outdoor tennis courts		Disability sports

### Sports Pass

Our extensive range of sports and recreation facilities can be accessed via your Sports Pass which is included in your library card. This gives you access to the Sports Training Village, Founders Complex and Sulis Sports Club (off-campus).

\*Many of these facilities are free to use but a charge may be made for some of the facilities and membership of specific clubs and there is a charge for gym membership.



[go.bath.ac.uk/pgt-sport](https://go.bath.ac.uk/pgt-sport)  
[www.teambath.com](https://www.teambath.com)



[go.bath.ac.uk/pgt-virtual-stv](https://go.bath.ac.uk/pgt-virtual-stv)

# Outside your studies

## Creative Skills Workshops

Opportunities to enhance your University learning experience

## Music Tuition

Handpicked expert tutors from the local area

## Music Rehearsal

State-of-the-art practice rooms

## Dance and wellbeing classes

Ballet, yoga and more

## Performance opportunities

On campus and in the city

## Arts and cultural societies

Excellent rehearsal and performance spaces

## Andrew Brownsword Gallery

Exhibitions to engage with on campus

## Art and research

Postgraduates can showcase projects at The Edge mixing arts and science

## Scholarships and Awards

Funding is available to pursue and fuel creative aspirations

# Arts and inspiration

For complete beginners to accomplished artists and performers, there are all sorts of ways to get involved in the arts at Bath.

The Edge is the University of Bath's arts centre. Open to all, it provides a creative and cultural hub on campus. Here you will find opportunities to participate in art and creative practice using top-class facilities.

Music tuition, yoga classes and dancefit sessions all geared towards furthering arts practice and wellbeing are available too. The Edge offers a range of creative development platforms, for students to add creative skills to their University learning experience, or develop their artistic talents alongside their studies.

Through The SU, you can keep up to date on all arts opportunities plus become involved behind the scenes too. The Edge is home to the creative endeavours of The SU's student societies engaged with the arts. Join groups of like-minded students who are passionate about dance, theatre or art, through to groups celebrating cultures from around the world, all making the most of the fantastic facilities.

The University also offers scholarships to help students maintain their arts and creative practice at the highest level, plus awards to support being creative.



Galleries, theatres, music and art studios, plus a lively café/bar – all can be found at the state-of-the-art Edge building, a destination that promotes the art in science and the science in art.



[www.bath.ac.uk/arts](http://www.bath.ac.uk/arts)



[go.bath.ac.uk/pgt-virtual-edge](http://go.bath.ac.uk/pgt-virtual-edge)



**Supporting  
you**

# Support and welfare

Our network of support services is designed to help you whenever you need it. You can rely on our help and expert advice for all aspects of university life – welfare issues, money, disability support and so much more.



The Wellbeing Team

**“I had a really positive experience reaching out to disability support. It was really helpful to have a lot of the support I need at university already in place before I arrived and started lectures.”**

**Carys Robins**  
MA Interpreting and Translating



## ■ Money

Managing your money can be a challenge but we have a Student Money Advice team on hand to support. They provide a confidential service on all aspects of student finance, including hardship funding, budgeting and practical tips.

[go.bath.ac.uk/pgt-money-advice](https://go.bath.ac.uk/pgt-money-advice)  
✉ [studentmoneyadvice@bath.ac.uk](mailto:studentmoneyadvice@bath.ac.uk)

## ■ Disability

The Disability Service provides advice and support for students with any form of disability. This includes: mobility and sensory impairment; specific learning difficulties; autistic spectrum disorders; mental health difficulty; and long-term health conditions.

[go.bath.ac.uk/pgt-disability-service](https://go.bath.ac.uk/pgt-disability-service)  
✉ [disabilityadvice@bath.ac.uk](mailto:disabilityadvice@bath.ac.uk)

## ■ Childcare

Westwood Nursery provides quality campus-based care for children aged six months to school entry age. Places are subject to availability. Contact the Services Manager for further details.

✉ [nursery@bath.ac.uk](mailto:nursery@bath.ac.uk)  
☎ +44 (0)1225 386518

## ■ Faith

The University Ecumenical Chaplaincy Centre welcomes those of all faiths and no faith with a Chaplain on call for students every weekday. We have a Muslim prayer room on campus with a washing facilities.

[go.bath.ac.uk/pgt-chaplaincy](https://go.bath.ac.uk/pgt-chaplaincy)

## ■ Health


There is a University Medical Centre and Dental Practice situated on campus, providing a wide range of NHS services. You will need to register when you arrive here. Medical Centre:

[www.umcbath.co.uk](http://www.umcbath.co.uk)

## Nightline

Students' Union's Support Scheme

Nightline is a confidential listening, support and practical information service run by trained students, for students. You can talk to them about anything – big or small – in confidence, remaining fully anonymous. They won't judge you or tell you what to do. They will simply listen. They are open 8pm-8am every night of the semester. Their telephone number is on the back of your library card.

 [go.bath.ac.uk/pgt-nightline](https://go.bath.ac.uk/pgt-nightline)

## ■ Wellbeing service

Here to smooth out any bumps along the way, our Wellbeing Advisers are on hand to help and support you. You can talk to a Wellbeing Adviser about anything - they work hard to create a safe and inclusive space. Our service is confidential and run by professional and highly skilled wellbeing advisors who will support, advise and listen to any worries or problems you may be having with the view to creating a plan of support moving forward to get you back on track. We can support you with a number of issues including emotional difficulties, relationships, personal and family challenges, loneliness and isolation, mental health and anything affecting your studies. Welfare and wellbeing drop-in sessions are run every day.\*

[go.bath.ac.uk/pgt-wellbeing](https://go.bath.ac.uk/pgt-wellbeing)

\*Hours may vary during weekends and University vacation. Please visit our webpages for further information.

## ■ Counselling and mental health

The Counselling and Mental Health Service is here to help you gain understanding and insight into any difficulties you may be experiencing, to develop emotional resilience and put into effect real change, enabling you to fulfill your academic and personal potential. The Service offers free and confidential support. As well as providing one to one support we also offer a comprehensive range of groups covering a range of issues.

[go.bath.ac.uk/pgt-counselling](https://go.bath.ac.uk/pgt-counselling)



# Support for international students

Our community is made up of students and staff from all over the world. Over 100 nationalities are represented among our 3,500 international students and we embrace the diversity and multi-culturalism that our international students bring to life at Bath.

We recognise that to study in the UK and to move far away from home is a big decision for you. That's why we provide a range of services to ensure your move to Bath is as straight forward as possible. We can also help you connect with our alumni students around the world to find out what it is like to study at Bath.



**"Meeting lots of friendly people and getting great support from the student services helped me settle in quickly."**

**Stacy Lin (China)**  
MSc Management

## ■ Before you leave for Bath

We will communicate with you regularly to help you plan for your journey to Bath. We also suggest that you contact the British Embassy or High Commission/Consulate in your own country for advice for entry to the UK as a student.

## ■ Your application

We have a dedicated team to help you with any questions you may have when applying for a postgraduate course.

## ■ Immigration

Many of our international students will require a student visa to study in the UK. We currently have around 3,000 students with a student visa at the University of Bath. Our Student Immigration Service is here to advise on all aspects of your visa application and to support you when you are here. We also offer student visa extension appointments for visa applications made in the UK and support for other immigration categories such as the Visitor visa and post study work visas, including the Graduate Route which starts in summer 2021. Find out more at: [go.bath.ac.uk/pgt-visas](https://go.bath.ac.uk/pgt-visas)

## ■ Accommodation

You will need to submit an online application for accommodation once you have accepted an offer to study at the University. As an international student (not including EU students) you are guaranteed university accommodation if you apply for it. You will be housed with other postgraduate students and more than likely with other international students. There are several accommodation options to suit different needs and budgets – more information can be found on pages 36 to 37.

## ■ Extra support when you arrive

All our international students can expect a helping hand on arrival: we can collect you by bus from London Heathrow Airport and get you settled into your new accommodation. We organise a welcome programme of events for our international students, including information sessions, tours of the campus and city, and social events. You can also speak to an adviser in person at one of our daily drop-in advice sessions in the Student Services Centre.

## ■ Language support

If you are not a native English speaker, you will be offered English language support to help you continue to build your language skills while you study. You can attend an intensive pre-sessional course in the summer to prepare you to succeed here at Bath. Successful completion of the course means that you will meet the English language requirements for your postgraduate degree programme; you will not need to take another IELTS test.

## ■ Get involved

We encourage all our students to get involved with activities outside of their lectures. Joining a society, a sports club or becoming a community volunteer are great ways to meet new friends, familiarise yourself with UK culture, develop your skills, and improve your conversational English.



[go.bath.ac.uk/pgt-international](https://go.bath.ac.uk/pgt-international)



**Next  
steps**

# Fees, funding and scholarships

Studying for a master's degree is a great investment in your future. We also understand that it is expensive. We've got all the latest information regarding fees, loans and scholarships to make it easier for you to make an informed choice.

## Tuition fees

Tuition fees will vary depending on your course and whether you are a UK or an overseas student. Fees for the academic year 2021/22 for individual taught courses is detailed in the course finder in this prospectus (p55 to p61) or at [go.bath.ac.uk/pgt-tuition-fees](https://go.bath.ac.uk/pgt-tuition-fees).

## Postgraduate master's loans

Getting a postgraduate master's loan could significantly reduce the burden of paying for your studies. Eligible UK master's students can currently borrow up to £11,222 (2020-21 academic year). How you use the loan is up to you - either to pay for your tuition fees or living costs. Part-time students can also apply. Loan repayments will begin after you have completed your master's degree and you have an annual income over £21,000. Students from Scotland, Wales and Northern Ireland have access to different loans for their postgraduate study and more information can be found when you visit [www.gov.uk/masters-loan](https://www.gov.uk/masters-loan)

## Part-time work

Working part-time during your studies is a great way to contribute towards your costs while studying and can be really useful for future employment, so it is worth exploring the options available in Bath. If you already have a job with a large organisation, you could see if it is possible to transfer to a local branch. The Students' Union also advertises part-time work opportunities, both on and off campus, to students.

For more advice about employment rights as an international student please visit [go.bath.ac.uk/pgt-visas](https://go.bath.ac.uk/pgt-visas)



## Scholarships and bursaries

We want you to have the means to pursue your postgraduate study, so we provide a number of scholarships and bursaries to help you invest in your future:


- **Dean's Award for Academic Excellence:** these scholarships reward academic excellence. There are twenty-four scholarships in total, each is worth £5,000.
- **Global Leaders scholarships:** these scholarships are open to applicants of all nationalities and are awarded for future leadership potential based on academic excellence, exceptional communication and interpersonal skills, and future leadership potential. Applicants should demonstrate excellent team working skills and have a strong vision for the future. There are forty-five scholarships in total, each worth up to £5,000.

The Dean's Awards and Global Leaders scholarships are open to applicants for courses offered by our Faculties of Engineering & Design, Humanities & Social Sciences and Science.

### School of Management scholarships

The School of Management runs scholarship schemes for both MSc and MBA students.

- **MSc scholarships:** there are over 30 scholarships open to School of Management MSc offer holders, each is worth £5,000. More detail is available at [go.bath.ac.uk/pgt-som-msc-fees-funding](https://go.bath.ac.uk/pgt-som-msc-fees-funding)
- **MBA scholarships:** the School of Management offers awards for both our Full-time and Executive MBA programmes to support the best talent from around the world. These awards typically range from £3,000 up to 30% of the tuition fee. More detail is available at [go.bath.ac.uk/pgt-funding-mba](https://go.bath.ac.uk/pgt-funding-mba)

 For the most up to date information about scholarships visit us on [go.bath.ac.uk/pgt-funding](https://go.bath.ac.uk/pgt-funding)

### Bath students and alumni bursaries

The University of Bath offers bursaries to its graduate students and alumni:

- **Bath alumni:** if you have graduated with an honours degree or equivalent from the University of Bath and are self-financing, you may qualify for a 10% discount on tuition fees for a postgraduate course here at Bath. Your fees will be automatically discounted if you receive an offer.
- **Taught postgraduate master's bursaries:** we offer bursaries worth between £5,000 and £10,000, to students with home (UK) status who have an undergraduate honours degree from the University of Bath and commenced studies from 2012 onwards (those who hold an integrated undergraduate master's degree are not eligible.). You must also have previously been in receipt of an undergraduate Bath Bursary or Gold Scholarship Programme award and have no more than one year study break before undertaking your master's course. Eligible students will be invited to apply once applications are open.



# Applying to Bath

## 1

### Choose a course

Before you apply, find out more about our postgraduate taught courses at [go.bath.ac.uk/pgt-study](https://go.bath.ac.uk/pgt-study)

You can also contact us at:

✉ [pgtadmissions@bath.ac.uk](mailto:pgtadmissions@bath.ac.uk)

or apply for a management course:

✉ [mn-msc@bath.ac.uk](mailto:mn-msc@bath.ac.uk)

## 2

### Review the entry requirements

Entry requirements vary by course and are there to make sure that you have the necessary skills to succeed. We will consider your whole application when assessing your suitability for the chosen course and may recommend an alternative when appropriate.

## 3

### Check the application deadline

Deadlines to apply may vary so please check when you need to submit your application for your specific course. We recommend that you apply as early as possible; the entry for many courses is competitive and you need to allow enough time to apply for funding, accommodation and visas if required.

## 4

### Apply online

Register online and complete the online application at [go.bath.ac.uk/pgt-apply](https://go.bath.ac.uk/pgt-apply). You will be able to save and update your information before you submit your application. You will also need to include a personal statement and upload supporting documents such as degree certificates, an academic reference and your CV.

## 5

### Your offer

If you receive an offer, use our online portal called Application Tracker to accept or decline as soon as possible. For some courses you will need to pay a deposit when you accept the offer. You can receive an unconditional or a conditional offer. With an unconditional offer, you have met all the required academic conditions and we are offering you a place. If the offer is conditional you will need to work towards meeting the conditions of your offer. These requirements may include English language scores, degree results and satisfactory references.



[go.bath.ac.uk/pgt-admissions](https://go.bath.ac.uk/pgt-admissions)



Please visit our website for more information about entry requirements and the content of the courses.

[go.bath.ac.uk/pgt-study](https://go.bath.ac.uk/pgt-study)



Scan me

# Course Finder

Discover the postgraduate taught courses available at Bath in this course directory.

The directory includes fees for both UK and EU/international students. Fees are for the 2021/22 academic year only.

Tuition fees are liable to increase annually for all University of Bath students. Once you have started your studies, you should budget for an increase of up to 5% each year for every further year of study. We will not increase your fees each year by more than this percentage. If you defer your entry, you will pay the fees for the year that you start your course and these may be more than 5% higher than the previous year.

The directory shows whether you can study part-time or full-time. The fees are for full-time courses starting in 2021 unless the courses are only available part-time. The fee for part-time courses is half the cost of full-time courses, except for our Executive MBA\*. Fees for online courses and distance learning are shown per unit.

Our courses are grouped in tables by subject area and then listed by alphabetical order.

\*Please visit [bathmba.com](https://bathmba.com) for details.

## Courses

	Tuition fees		2021/22	Full-time (FT) Part-time (PT)
	UK	EU/ International		

### Architecture and Civil Engineering

MSc Architectural Engineering: Environmental Design	£10,000	£21,500	FT
MSc Civil Engineering: Innovative Structural Materials	£11,000	£25,000	FT
MSc Conservation of Historic Buildings	£10,000	£21,500	FT
MSc Modern Building Design (with placement) *	£12,500	£26,875	FT (15 months)
PG Cert Professional Practice	£2,090	£2,090	PT

### Business, Management, Finance

MBA	See website for details: bathmba.com		FT/PT
MSc Accounting and Finance	£18,000	£26,000	FT
MSc Applied Economics (Banking and Financial Markets) (online degree: 180 credits required) **	£722 per 10 credits		PT (2 years, 6 months)
MSc Applied Economics with Banking and Financial Markets	£10,000	£21,500	FT
MSc Business Analytics	£14,500	£22,000	FT
MSc Business Analytics (online degree: 180 credits required) **	£833 per 10 credits		PT (2 years, 3 months)
MSc Economics and Finance	£10,000	£21,500	FT
MSc Economics for Business Intelligence and Systems	£25,000	£25,000	FT
MSc Engineering Business Management	£14,500	£22,000	FT
MSc Entrepreneurship and Management	£14,500	£22,000	FT
MSc Entrepreneurship Management and Innovation (online degree: 180 credits required) **	£833 per 10 credits		PT (2 years, 3 months)
MSc Finance	£18,000	£26,000	FT
MSc Finance with Banking	£18,000	£26,000	FT
MSc Finance with Risk Management	£18,000	£26,000	FT
MSc Human Resource Management and Consulting	£14,500	£22,000	FT
MSc Innovation and Technology Management	£14,500	£22,000	FT
MSc International Management	£14,500	£22,000	FT
MSc Management	£14,500	£22,000	FT
MSc Marketing	£14,500	£22,000	FT
MSc Operations, Logistics and Supply Chain Management	£14,500	£22,000	FT
MSc Sport Management	£10,000	£21,500	FT
MSc Sustainability and Management	£14,500	£22,000	FT
MA International Higher Education Management (IHEM) †	£8,000	£9,000	PT (2 years)

## Courses

	Tuition fees		2021/22	Full-time (FT) Part-time (PT)
	UK	EU/ International		

### Chemical Engineering

MSc Environmental Engineering	£11,000	£25,000	FT
-------------------------------	---------	---------	----

### Computer Science

MSc Artificial Intelligence (online degree: 180 credits required) **	£722 per 10 credits		PT (2 years, 3 months)
MSc Computer Science	£10,500	£23,000	FT
MSc Computer Science (online degree: 180 credits required) **	£722 per 10 credits		PT (2 years, 3 months)
MSc Data Science	£11,000	£25,000	FT
MSc Data Science (including a placement year) ††	£11,000 + placement fee	£25,000 + placement fee	FT (2 years)
MSc Data Science and Statistics	£11,000	£25,000	FT
MSc Data Science and Statistics (including a placement year) ††	£11,000 + placement fee	£25,000 + placement fee	FT (2 years)
MSc Human Computer Interaction	£11,000	£25,000	FT
MSc Human Computer Interaction (including a placement year) ††	£11,000 + placement fee	£25,000 + placement fee	FT (2 years)
MSc Machine Learning and Autonomous Systems	£11,000	£25,000	FT
MSc Machine Learning and Autonomous Systems (including a placement year) ††	£11,000 + placement fee	£25,000 + placement fee	FT (2 years)
MSc Software Systems	£11,000	£25,000	FT
MSc Software Systems (including a placement year) ††	£11,000 + placement fee	£25,000 + placement fee	FT (2 years)

\* Fees for the placement are included.

\*\* Fees are valid up to and including September 2021 intake. You should budget for an increase of up to a maximum of 5% each year. Fees are paid per credit. To qualify for an online MSc you will require a total of 180 credits. Tuition fees are liable to increase each January.

† Fees shown are for the first year of study.

†† Placement fees for 2021-22 are £3,055 for UK students and £6,945 for EU/international students.



Fees are liable to increase annually. You should budget for an increase of up to 5% each year for every further year of study.

## Courses

	Tuition fees		2021/22	Full-time (FT) Part-time (PT)
	UK	EU/ International		

### Drug Discovery

MSc Drug Discovery	£11,000	£25,000	FT
--------------------	---------	---------	----

### Economics

MSc Applied Economics	£10,000	£21,500	FT
MSc Applied Economics (Banking and Financial Markets) (online degree: 180 credits required)*	£722 per 10 credits		PT (2 years, 6 months)
MSc Applied Economics with Banking and Financial Markets	£10,000	£21,500	FT
MSc Applied Psychology and Economic Behaviour	£10,500	£23,000	FT
MSc Economics	£10,000	£21,500	FT
MSc Economics and Finance	£10,000	£21,500	FT
MSc Economics for Business Intelligence and Systems	£25,000	£25,000	FT
MSc International Development with Economics	£10,000	£21,500	FT/PT
MRes Economics	£4,500	£19,100	FT/PT

### Education

MA Education (distance learning)**	£1,325 per 12 credit unit + dissertation fee		PT (3-5 years)
MA English as a Medium of Instruction	£10,000	£21,500	FT
MA International Education and Globalisation	£10,000	£21,500	FT
MA International Higher Education Management (IHEM) †	£8,000	£9,000	PT (2 years)
MA Teaching English to Speakers of Other Languages (TESOL)	£10,000	£21,500	FT
MRes Advanced Quantitative Methods in Social Sciences	£4,500	£19,100	FT/PT
MRes Education	£4,500	£19,100	FT/PT
Postgraduate Certificate in International Education (PGCiE) ††	£1,325 per 12 credit unit and £660 per 6 credit unit		PT (2 years)

### Electronic and Electrical Engineering

MSc Mechatronics	£11,000	£25,000	FT
MSc Robotics and Autonomous Systems	£11,000	£25,000	FT
MSc Robotics and Autonomous Systems (with placement) ‡	£13,750	£31,250	FT (15 months)

## Courses

	Tuition fees		2021/22	Full-time (FT) Part-time (PT)
	UK	EU/ International		

### Health

MSc Sport and Exercise Medicine (distance learning)	See website for full fee structure		PT (2-5 years)
MSc Sport Management	£10,000	£21,500	FT
MSc Sports Physiotherapy (distance learning)	See website for full fee structure		PT (3-5 years)
MRes Health and Wellbeing	£4,500	£19,100	FT/PT

### Mathematics

MSc Mathematics with Data Science for Industry	£11,000	£25,000	FT
--	---------	---------	----

### Mechanical Engineering

MSc Automotive Engineering with Electric Propulsion	£11,000	£25,000	FT
MSc Engineering Business Management	£14,500	£22,000	FT
MSc Engineering Design	£11,000	£25,000	FT
MSc Innovation and Technology Management	£14,500	£22,000	FT

### Molecular Biosciences

MSc Molecular Biosciences (Bioinformatics)	£11,000	£25,000	FT
MSc Molecular Biosciences (Biotechnology)	£11,000	£25,000	FT
MSc Molecular Biosciences (Medical Biosciences)	£11,000	£25,000	FT
MSc Molecular Biosciences (Microbiology)	£11,000	£25,000	FT

\* Fees are valid up to and including September 2021 intake. You should budget for an increase of up to a maximum of 5% each year. Fees are paid per credit. To qualify for an online MSc you will require a total of 180 credits. Tuition fees are liable to increase each January.

\*\* Fees are paid per credit unit. To qualify for the distance learning MA you will require 90 credits (including 30 credits for the dissertation). The dissertation fee is £3,330. Please refer to the website for full fee structure.

† Fees shown are for the first year of study.

†† Fees are paid per credit unit. To qualify for the PGCiE you will require 30 credits. Please refer to the website for full fee structure.

‡ Fees for the placement are included.



Fees are liable to increase annually. You should budget for an increase of up to 5% each year for every further year of study.

## Courses

	Tuition fees		2021/22	Full-time (FT) Part-time (PT)
	UK	EU/ International		

### Politics, Languages and International Studies

MA Contemporary European Studies - Euromasters	See website for details		FT (2 years)
MA Contemporary European Studies - Euromasters with Trans-Atlantic track	See website for details		FT (2 years)
MA Gender and Politics	£10,000	£21,500	FT/PT
MA International Relations	£10,000	£21,500	FT/PT
MA International Relations and European Politics	£10,000	£21,500	FT/PT
MA International Security	£10,000	£21,500	FT/PT
MA Interpreting and Translating (Chinese)	£10,500	£23,000	FT
MA Interpreting and Translating (French, German, Italian, Spanish and Russian)	£10,500	£23,000	FT
MA Translation and Professional Language Skills (French, German, Italian, Spanish and Russian)	£10,000	£21,500	FT
MA Translation with Business Interpreting (Chinese)	£10,000	£21,500	FT
MRes Politics and International Studies	£4,500	£19,100	FT/PT

### Psychology

MSc Applied Clinical Psychology	£10,500	£23,000	FT/PT
MSc Applied Forensic Psychology with Counselling (with 12-month placement) *	£10,500 + placement fee	£23,000 + placement fee	FT (2 years)
MSc Applied Psychology and Economic Behaviour	£10,500	£23,000	FT
MSc Health Psychology	£10,500	£23,000	FT/PT
MRes Psychology	£4,500	£19,100	FT/PT
MRes Sustainable Futures	£4,500	£19,100	FT/PT

## Courses

	Tuition fees		2021/22	Full-time (FT) Part-time (PT)
	UK	EU/ International		

### Social and Policy Sciences

MSc Humanitarianism, Conflict and Development (distance learning) **	£5,835	£5,835	PT (2 years)
MSc International Development	£10,000	£21,500	FT/PT
MSc International Development with Conflict and Humanitarian Action	£10,000	£21,500	FT/PT
MSc International Development with Economics	£10,000	£21,500	FT/PT
MSc International Development, Social Justice and Sustainability	£10,000	£21,500	FT/PT
MSc Public Policy (distance learning) **	£5,565	£5,565	PT (2 years)
MRes Advanced Quantitative Methods in Social Sciences	£4,500	£19,100	FT/PT
MRes European Social Policy	£4,500	£19,100	FT/PT
MRes Global Political Economy	£4,500	£19,100	FT/PT
MRes International Development	£4,500	£19,100	FT/PT
MRes Security, Conflict and Human Rights	£4,500	£19,100	FT/PT
MRes Social Policy	£4,500	£19,100	FT/PT
MRes Social Work	£4,500	£19,100	FT/PT
MRes Sociology	£4,500	£19,100	FT/PT

\* Placement fees for 2021-22 are £2,915 for UK students and £6,390 for international students.

\*\* Fees shown are for the 1st year of study.



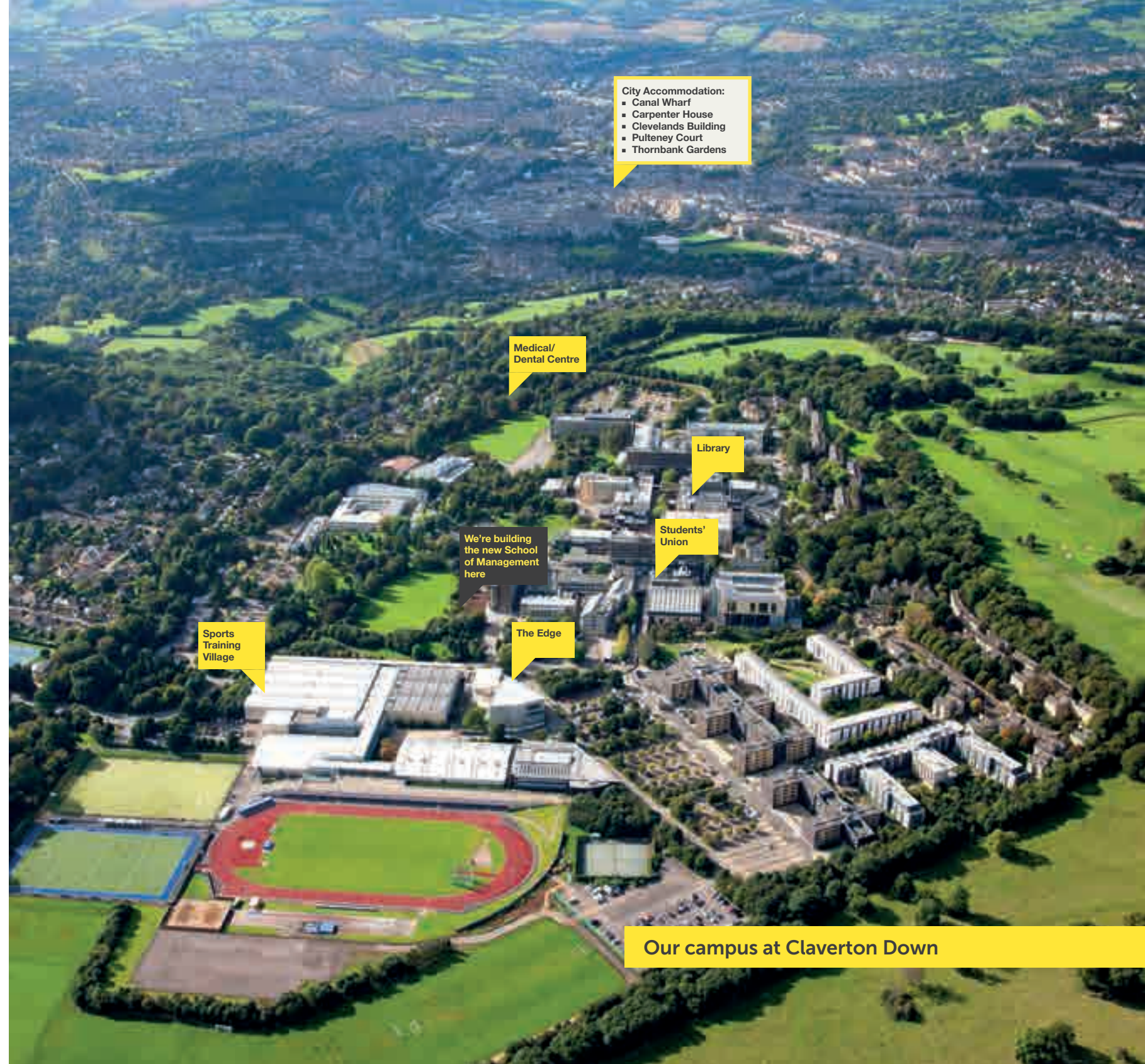
Fees are liable to increase annually. You should budget for an increase of up to 5% each year for every further year of study.

# Important information

This prospectus is published for the guidance of students who wish to enter the University in the 2021-22 academic year. This prospectus was published in August 2020 during the COVID-19 pandemic. As a result it is possible that some information included in this prospectus may change. The information in the publication is correct at time of going to press. For the latest information about the University of Bath and its courses, see [go.bath.ac.uk/pgt-study](http://go.bath.ac.uk/pgt-study)

There may be occasions where due to unforeseen or unavoidable circumstances it becomes necessary to make significant changes to a course or to withdraw it or part of it, for example a particular unit/module. Such action could become necessary if for example the following were to occur:

- a member of staff leaves the University and we are unable to find a suitable replacement (e.g. with the requisite academic knowledge/ experience)
- a professional body or regulator/accreditor requires changes to be made to a course or withdraws their accreditation of a course
- changes have to be made to reflect legislative changes/requirements
- changes have to be made to reflect changes in standards set by relevant regulators and/or in keeping with best practice or developments related to a particular discipline/subject area
- student feedback clearly indicates that immediate changes be made to a course or unit
- unexpected low recruitment to a course or unit/module means it is simply no longer viable or practical to run it.



- City Accommodation:
- Canal Wharf
  - Carpenter House
  - Clevelands Building
  - Pulteney Court
  - Thornbank Gardens

Medical/  
Dental Centre

Library

Students'  
Union

We're building  
the new School  
of Management  
here

Sports  
Training  
Village

The Edge

Our campus at Claverton Down



100% online MSc

Go  
further



Backed by world-leading research, our 100% online courses are designed to provide rigorous intellectual challenge, real-world relevance and essential preparation for the workplace.

Course start dates: January, May and September each year

**Applied Economics (Banking and Financial Markets) online MSc**

Equip yourself with the tools to put real-world economics into action.

**Artificial Intelligence online MSc**

Explore applications and implications of AI in the real world, from the technical to the ethical.

**Business Analytics online MSc**

Develop your data knowledge to solve today's biggest business challenges.

**Computer Science online MSc**

Develop the coding skills you need to become a software developer.

**Entrepreneurship Management and Innovation online MSc**

Hone your entrepreneurial spirit to lead your own business initiatives.

Get in touch and find out more:

+44 (0)1225 738 000

[go.bath.ac.uk/pgt-online-courses](https://go.bath.ac.uk/pgt-online-courses)

## Thinking ahead to doctoral study?



**“By the time I came to do my MSc, I didn’t feel ready to leave Bath.**

**And by the time I came to do my PhD, I still wasn’t ready, my department was growing, developing and innovating.”**

Tamsyn Hawken PhD student Department of Psychology

Many of the students we support started their postgraduate study journey at Bath and decided to stay.

If you’re interested in following your master’s with a research degree, get in touch and find out more about joining our vibrant and diverse community.

**87%** of our research is classed world-leading or internationally excellent  
The Research Excellence Framework – REF 2014

[go.bath.ac.uk/postgraduate-research](https://go.bath.ac.uk/postgraduate-research)

[doctoraladmissions@bath.ac.uk](mailto:doctoraladmissions@bath.ac.uk)

[@DoctoralBath](https://twitter.com/DoctoralBath)

DOCTORAL  
COLLEGE

# Visit us

## Journey times by train:

**London:** 1 hour 20 minutes

**Birmingham:** 1 hour 40 minutes

**Cardiff:** 1 hour 10 minutes

**Manchester:** 3 hours 20 minutes

**Southampton:** 1 hour 30 minutes

**Exeter:** 1 hour 20 minutes



## By train

Bath Spa station is on the main line between Bristol and London Paddington. It can be reached from North and South via Bristol Temple Meads.



## By car

M4 to Junction 18 and A46 to Bath. Follow signs for The American Museum and University. The campus is located in Claverton Down, on the east side of Bath.



## Parking on campus

Visitor parking pay & display spaces are accessed in East Extension, A and G car parks via the main entrance on Claverton Down Road. East car park provides a wheelchair and accessible approach to the Parade and a drop off point by 1WN also provides wheelchair access to the Parade.



## By coach

Frequent National Express services operates from London Victoria and London Heathrow Airport to Bath.



## By bus

There are a number of frequent bus services available. The U1 service starts and terminate on campus and travels throughout the city centre.



## By air

The nearest airport is Bristol International Airport. There are also regular connections by train or coach from London Heathrow Airport.

# Connect with us

#BetteratBath



/uniofbath



@uniofbath



@uniofbath



uniofbath



/uobath



UniofbathUK

[www.bath.ac.uk](http://www.bath.ac.uk)

# Postgraduate Virtual Open Days

Wherever you are, you  
can find out first-hand  
exactly what it's like to  
study at Bath

## Chat live

with our staff and current  
postgraduate students

## Ask questions

directly to students and  
staff in our live webinars

## Find out more

about our courses,  
student life, admissions  
process, accommodation  
and careers

## Register now

[go.bath.ac.uk/pgt-open-day](https://go.bath.ac.uk/pgt-open-day)

2020

Wednesday 4 November

2021

Wednesday 3 February

Wednesday 24 March

Wednesday 9 June

**"Attending a Virtual  
Open Day last year helped  
me choose Bath. Now  
I'm one of the student  
ambassadors helping at  
the virtual events."**

**Medha Arora, MSc Data Science**



UNIVERSITY OF  
**BATH**